

## Anti-Ub antibody (N-Term) (STJ96863)

STJ96863

### GENERAL INFORMATION

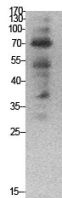
<b>Product Type</b>	Primary antibodies
<b>Short Description</b>	Rabbit polyclonal antibody anti-Ubiquitin-60S ribosomal protein L40 and Ubiquitin-40S ribosomal protein S27a and Polyubiquitin-B and Polyubiquitin-C (N-Term) is suitable for use in Western Blot and ELISA research applications.
<b>Applications</b>	WB, ELISA
<b>Host/Source</b>	Rabbit
<b>Reactivity</b>	Human, Mouse, Rat

### PRODUCT PROPERTIES

<b>Clonality</b>	Polyclonal
<b>Clone ID</b>	
<b>Concentration</b>	1 mg/mL
<b>Conjugation</b>	Unconjugated
<b>Purification</b>	The antibody was affinity-purified from rabbit anti-serum by affinity-chromatography.
<b>Dilution</b>	WB 1:500-1:2000
<b>Range</b>	ELISA 1:20000
<b>Formulation</b>	PBS, 50% Glycerol, 0.5% BSA and 0.02% Sodium Azide.
<b>Isotype</b>	IgG
<b>Storage</b>	Store at -20°C for up to 1 year from the date of receipt, and avoid repeat freeze-thaw cycles.
<b>Instruction</b>	

### TARGET INFORMATION

<b>Gene ID</b>	<a href="#">7314</a> <a href="#">7316</a> <a href="#">7311</a> <a href="#">UBB</a> <a href="#">UBC</a>
<b>Uniprot ID</b>	<a href="#">UBB_HUMAN</a> <a href="#">UBC_HUMAN</a> <a href="#">RL40_HUMAN</a>
<b>Immunogen</b>	Synthesized peptide derived from the N-terminal region of human Ub.
<b>Immunogen Region</b>	N-Term
<b>Specificity</b>	Ub polyclonal antibody (Ubiquitin-60S ribosomal protein L40 and Ubiquitin-40S ribosomal protein S27a and Polyubiquitin-B and Polyubiquitin-C) binds to endogenous Ubiquitin-60S ribosomal protein L40 and Ubiquitin-40S ribosomal protein S27a and Polyubi
<b>Immunogen Sequence</b>	



Western blot analysis of HepG2, HeLa cells using Ub Polyclonal Antibody. Secondary antibody was diluted at 1:20000

This product is suitable for in-vitro studies under the RESEARCH USE ONLY [RUO] licence. This product must not be used as for diagnostic or other medical purposes.  
St John's Laboratory Ltd, Knowledge Dock Business Centre, University Way, London, E16 2RD | Tel: 0208 223 3081