

Anti-EF-1 Alpha 1/2 antibody (N-Term) (STJ96859)

STJ96859

GENERAL INFORMATION

Product Type	Primary antibodies
Short Description	Rabbit polyclonal antibody anti-Elongation factor 1-alpha 1 and Elongation factor 1-alpha 2 and Putative elongation factor 1-alpha-like 3 (N-Term) is suitable for use in Western Blot and ELISA research applications.
Applications	WB, ELISA
Host/Source	Rabbit
Reactivity	Human, Mouse, Rat

PRODUCT PROPERTIES

Clonality	Polyclonal
Clone ID	
Concentration	1 mg/mL
Conjugation	Unconjugated
Purification	The antibody was affinity-purified from rabbit anti-serum by affinity-chromatography.
Dilution Range	WB 1:500-1:2000 ELISA 1:20000
Formulation	PBS, 50% Glycerol, 0.5% BSA and 0.02% Sodium Azide.
Isotype	IgG
Storage Instruction	Store at -20°C for up to 1 year from the date of receipt, and avoid repeat freeze-thaw cycles.

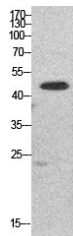
TARGET INFORMATION

Gene ID	1915 1917 NA EEF1A1 EEF1A2 EF1A1_HUMAN EF1A2_HUMAN EF1A3_HUMAN
----------------	---

Immunogen Synthesized peptide derived from the N-terminal region of human EF-1 Alpha 1/2.
Immunogen Region N-Term

Specificity EF-1 Alpha 1/2 polyclonal antibody (Elongation factor 1-alpha 1 and Elongation factor 1-alpha 2 and Putative elongation factor 1-alpha-like 3) binds to endogenous Elongation factor 1-alpha 1 and Elongation factor 1-alpha 2 and Putative elongation fac

Immunogen Sequence



Western blot analysis of HepG2 cells using EF-1 Alpha 1/2 Polyclonal Antibody. Secondary antibody was diluted at 1:20000

This product is suitable for in-vitro studies under the RESEARCH USE ONLY [RUO] licence. This product must not be used as for diagnostic or other medical purposes.
St John's Laboratory Ltd, Knowledge Dock Business Centre, University Way, London, E16 2RD | Tel: 0208 223 3081