

Anti-HDGFL3 antibody (131-180 Internal) (STJ96849)

STJ96849

GENERAL INFORMATION

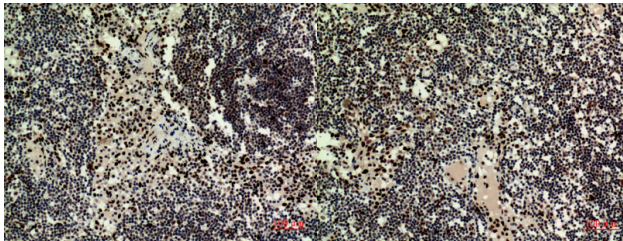
Product Type	Primary antibodies
Short Description	Rabbit polyclonal antibody anti-Hepatoma-Derived Growth Factor-Related Protein 3 (131-180 Internal) is suitable for use in Western Blot, Immunohistochemistry, Immunofluorescence and ELISA research applications.
Applications	WB, IHC-P, IF-P, ELISA
Host/Source	Rabbit
Reactivity	Human, Mouse, Rat

PRODUCT PROPERTIES

Clonality	Polyclonal
Clone ID	
Concentration	1 mg/mL
Conjugation	Unconjugated
Purification	The antibody was affinity-purified from rabbit anti-serum by affinity-chromatography.
Dilution Range	WB 1:500-1:2000 IHC 1:100-1:300 ELISA 1:20000
Formulation	PBS, 50% Glycerol, 0.5% BSA and 0.02% Sodium Azide.
Isotype	IgG
Storage Instruction	Store at -20°C for up to 1 year from the date of receipt, and avoid repeat freeze-thaw cycles.

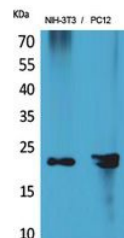
TARGET INFORMATION

Gene ID	50810
Gene Symbol	HDGFL3
Uniprot ID	HDGR3_HUMAN
Immunogen	The antiserum was produced against synthesized peptide derived from the Internal region of human HDGFRP3 at amino acid range 131-180
Immunogen Region	131-180 Internal
Specificity	HDGFL3 polyclonal antibody (Hepatoma-Derived Growth Factor-Related Protein 3) binds to endogenous Hepatoma-Derived Growth Factor-Related Protein 3 at the amino acid region 131-180 Internal.
Immunogen Sequence	



Immunohistochemical analysis of paraffin-embedded human-Lymph-nodes, antibody was diluted at 1:100

Immunohistochemical analysis of paraffin-embedded human-Lymph-nodes, antibody was diluted at 1:100



Western blot analysis of NIH-3T3, PC12 cells using HRP-3 Polyclonal Antibody. Secondary antibody was diluted at 1:20000

This product is suitable for in-vitro studies under the RESEARCH USE ONLY [RUO] licence. This product must not be used as for diagnostic or other medical purposes.
St John's Laboratory Ltd, Knowledge Dock Business Centre, University Way, London, E16 2RD | Tel: 0208 223 3081