

Anti-IL18R1 antibody (231-280 Internal) (STJ96837)

STJ96837

GENERAL INFORMATION

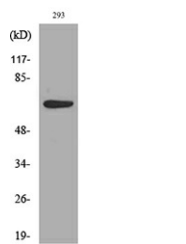
Product Type	Primary antibodies
Short Description	Rabbit polyclonal antibody anti-Interleukin-18 Receptor 1 (231-280 Internal) is suitable for use in Western Blot and ELISA research applications.
Applications	WB, ELISA
Host/Source	Rabbit
Reactivity	Human, Rat, Mouse

PRODUCT PROPERTIES

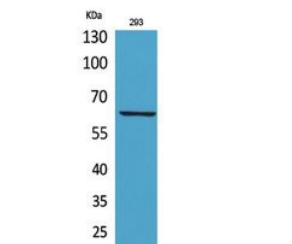
Clonality	Polyclonal
Clone ID	
Concentration	1 mg/mL
Conjugation	Unconjugated
Purification	The antibody was affinity-purified from rabbit anti-serum by affinity-chromatography.
Dilution Range	WB 1:500-1:2000 ELISA 1:20000
Formulation	PBS, 50% Glycerol, 0.5% BSA and 0.02% Sodium Azide.
Isotype	IgG
Storage Instruction	Store at -20°C for up to 1 year from the date of receipt, and avoid repeat freeze-thaw cycles.

TARGET INFORMATION

Gene ID	8809
Gene Symbol	IL18R1
Uniprot ID	IL18R_HUMAN
Immunogen	The antiserum was produced against synthesized peptide derived from the Internal region of human IL18R1 at amino acid range 231-280
Immunogen Region	231-280 Internal
Specificity	IL18R1 polyclonal antibody (Interleukin-18 Receptor 1) binds to endogenous Interleukin-18 Receptor 1 at the amino acid region 231-280 Internal.
Immunogen Sequence	



Western blot analysis of lysate from 293 cells, using IL18R1 Antibody.



Western blot analysis of 293 cells using IL-18R Polyclonal Antibody. Secondary antibody was diluted at 1:20000

This product is suitable for in-vitro studies under the RESEARCH USE ONLY [RUO] licence. This product must not be used as for diagnostic or other medical purposes.
St John's Laboratory Ltd, Knowledge Dock Business Centre, University Way, London, E16 2RD | Tel: 0208 223 3081