

Anti-ITGB2 antibody (621-670 Internal) (STJ96826)

STJ96826

GENERAL INFORMATION

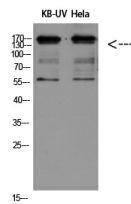
Product Type	Primary antibodies
Short Description	Rabbit polyclonal antibody anti-Integrin Beta-2 (621-670 Internal) is suitable for use in Western Blot and ELISA research applications.
Applications	WB, ELISA
Host/Source	Rabbit
Reactivity	Human, Rat, Mouse

PRODUCT PROPERTIES

Clonality	Polyclonal
Clone ID	
Concentration	1 mg/mL
Conjugation	Unconjugated
Purification	The antibody was affinity-purified from rabbit anti-serum by affinity-chromatography.
Dilution Range	WB 1:500-1:2000 ELISA 1:20000
Formulation	PBS, 50% Glycerol, 0.5% BSA and 0.02% Sodium Azide.
Isotype	IgG
Storage Instruction	Store at -20°C for up to 1 year from the date of receipt, and avoid repeat freeze-thaw cycles.

TARGET INFORMATION

Gene ID	3689
Gene Symbol	ITGB2
Uniprot ID	ITB2_HUMAN
Immunogen	The antiserum was produced against synthesized peptide derived from the Internal region of human ITGB2 at amino acid range 621-670
Immunogen Region	621-670 Internal
Specificity	ITGB2 polyclonal antibody (Integrin Beta-2) binds to endogenous Integrin Beta-2 at the amino acid region 621-670 Internal.
Immunogen Sequence	



Western blot analysis of KB-UV HeLa using Integrin Beta 2 Polyclonal Antibody diluted at 1:500. Secondary antibody was diluted at 1:20000



Western blot analysis of HeLa cells using Integrin Beta 2 Polyclonal Antibody. Antibody was diluted at 1:500. Secondary antibody was diluted at 1:20000

This product is suitable for in-vitro studies under the RESEARCH USE ONLY [RUO] licence. This product must not be used as for diagnostic or other medical purposes.
St John's Laboratory Ltd, Knowledge Dock Business Centre, University Way, London, E16 2RD | Tel: 0208 223 3081