

Anti-ITGAD antibody (901-950 Internal) (STJ96825)

STJ96825

GENERAL INFORMATION

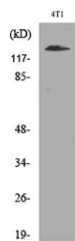
Product Type	Primary antibodies
Short Description	Rabbit polyclonal antibody anti-Integrin Alpha-D (901-950 Internal) is suitable for use in Western Blot, Immunohistochemistry, Immunofluorescence and ELISA research applications.
Applications	WB, IHC-P, IF-P, ELISA
Host/Source	Rabbit
Reactivity	Human, Rat, Mouse

PRODUCT PROPERTIES

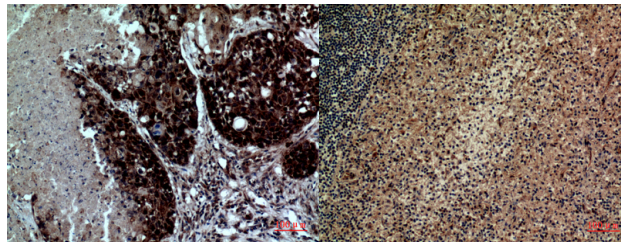
Clonality	Polyclonal
Clone ID	
Concentration	1 mg/mL
Conjugation	Unconjugated
Purification	The antibody was affinity-purified from rabbit anti-serum by affinity-chromatography.
Dilution Range	WB 1:500-1:2000 IHC 1:100-1:300 ELISA 1:20000
Formulation	PBS, 50% Glycerol, 0.5% BSA and 0.02% Sodium Azide.
Isotype	IgG
Storage Instruction	Store at -20°C for up to 1 year from the date of receipt, and avoid repeat freeze-thaw cycles.

TARGET INFORMATION

Gene ID	3681
Gene Symbol	ITGAD
Uniprot ID	ITAD_HUMAN
Immunogen	The antiserum was produced against synthesized peptide derived from the Internal region of human ITGAD at amino acid range 901-950
Immunogen Region	901-950 Internal
Specificity	ITGAD polyclonal antibody (Integrin Alpha-D) binds to endogenous Integrin Alpha-D at the amino acid region 901-950 Internal.
Immunogen Sequence	

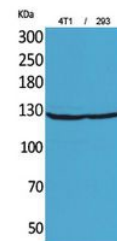


Western blot analysis of lysate from 4T1 cells, using ITGAD Antibody.



Immunohistochemical analysis of paraffin-embedded human-lung, antibody was diluted at 1:100

Immunohistochemical analysis of paraffin-embedded human-spleen, antibody was diluted at 1:100



Western blot analysis of 4T1, 293 cells using Integrin Alpha D Polyclonal Antibody. Secondary antibody was diluted at 1:20000

This product is suitable for in-vitro studies under the RESEARCH USE ONLY [RUO] licence. This product must not be used as for diagnostic or other medical purposes.
St John's Laboratory Ltd, Knowledge Dock Business Centre, University Way, London, E16 2RD | Tel: 0208 223 3081