

Anti-PRDX1 antibody (21-70 Internal) (STJ96820)

STJ96820

GENERAL INFORMATION

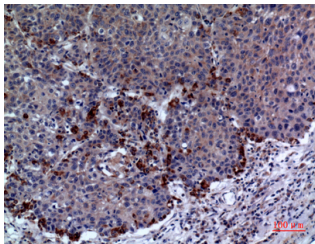
Product Type	Primary antibodies
Short Description	Rabbit polyclonal antibody anti-Peroxiredoxin-1 (21-70 Internal) is suitable for use in Western Blot, Immunohistochemistry, Immunofluorescence and ELISA research applications.
Applications	WB, IHC-P, IF-P, ELISA
Host/Source	Rabbit
Reactivity	Human, Mouse, Rat

PRODUCT PROPERTIES

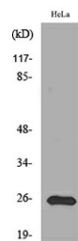
Clonality	Polyclonal
Clone ID	
Concentration	1 mg/mL
Conjugation	Unconjugated
Purification	The antibody was affinity-purified from rabbit anti-serum by affinity-chromatography.
Dilution Range	WB 1:500-1:2000 IHC 1:100-1:300 ELISA 1:20000
Formulation	PBS, 50% Glycerol, 0.5% BSA and 0.02% Sodium Azide.
Isotype	IgG
Storage Instruction	Store at -20°C for up to 1 year from the date of receipt, and avoid repeat freeze-thaw cycles.

TARGET INFORMATION

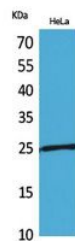
Gene ID	5052
Gene Symbol	PRDX1
Uniprot ID	PRDX1_HUMAN
Immunogen	The antiserum was produced against synthesized peptide derived from the Internal region of human PRDX1 at amino acid range 31-80
Immunogen Region	21-70 Internal
Specificity	PRDX1 polyclonal antibody (Peroxiredoxin-1) binds to endogenous Peroxiredoxin-1 at the amino acid region 21-70 Internal.
Immunogen Sequence	



Immunohistochemical analysis of paraffin-embedded human-lung, antibody was diluted at 1:100



Western blot analysis of lysate from HeLa cells, using PRDX1 Antibody.



Western blot analysis of HeLa cells using PRX 1 Polyclonal Antibody.. Secondary antibody was diluted at 1:20000

This product is suitable for in-vitro studies under the RESEARCH USE ONLY [RUO] licence. This product must not be used as for diagnostic or other medical purposes.
St John's Laboratory Ltd, Knowledge Dock Business Centre, University Way, London, E16 2RD | Tel: 0208 223 3081