

Anti-NRP1 antibody (311-360 Internal) (STJ96817)

STJ96817

GENERAL INFORMATION

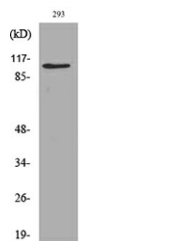
Product Type	Primary antibodies
Short Description	Rabbit polyclonal antibody anti-Neuropilin-1 (311-360 Internal) is suitable for use in Western Blot, Immunohistochemistry, Immunofluorescence and ELISA research applications.
Applications	WB, IHC-P, IF-P, ELISA
Host/Source	Rabbit
Reactivity	Human, Mouse, Rat

PRODUCT PROPERTIES

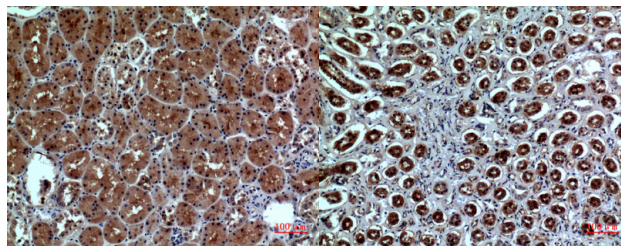
Clonality	Polyclonal
Clone ID	
Concentration	1 mg/mL
Conjugation	Unconjugated
Purification	The antibody was affinity-purified from rabbit anti-serum by affinity-chromatography.
Dilution Range	WB 1:500-1:2000 IHC 1:100-1:300 ELISA 1:20000
Formulation	PBS, 50% Glycerol, 0.5% BSA and 0.02% Sodium Azide.
Isotype	IgG
Storage Instruction	Store at -20°C for up to 1 year from the date of receipt, and avoid repeat freeze-thaw cycles.

TARGET INFORMATION

Gene ID	8829
Gene Symbol	NRP1
Uniprot ID	NRP1_HUMAN
Immunogen	The antiserum was produced against synthesized peptide derived from the Internal region of human NRP1 at amino acid range 321-370
Immunogen Region	311-360 Internal
Specificity	NRP1 polyclonal antibody (Neuropilin-1) binds to endogenous Neuropilin-1 at the amino acid region 311-360 Internal.
Immunogen Sequence	

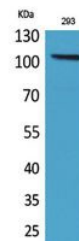


Western blot analysis of lysate from 293 cells, using NRP1 Antibody.



Immunohistochemical analysis of paraffin-embedded human-kidney, antibody was diluted at 1:100

Immunohistochemical analysis of paraffin-embedded human-kidney, antibody was diluted at 1:100



Western blot analysis of 293 cells using Neuropilin Polyclonal Antibody. Secondary antibody was diluted at 1:20000

This product is suitable for in-vitro studies under the RESEARCH USE ONLY [RUO] licence. This product must not be used as for diagnostic or other medical purposes.
St John's Laboratory Ltd, Knowledge Dock Business Centre, University Way, London, E16 2RD | Tel: 0208 223 3081