

Anti-DRD3 antibody (181-230 Internal) (STJ96813)

STJ96813

GENERAL INFORMATION

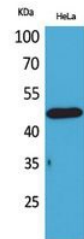
Product Type	Primary antibodies
Short Description	Rabbit polyclonal antibody anti-D (3 Dopamine Receptor (181-230 Internal) is suitable for use in Western Blot and ELISA research applications.
Applications	WB, ELISA
Host/Source	Rabbit
Reactivity	Human, Mouse, Rat

PRODUCT PROPERTIES

Clonality	Polyclonal
Clone ID	
Concentration	1 mg/mL
Conjugation	Unconjugated
Purification	The antibody was affinity-purified from rabbit anti-serum by affinity-chromatography.
Dilution Range	WB 1:500-1:2000 ELISA 1:20000
Formulation	PBS, 50% Glycerol, 0.5% BSA and 0.02% Sodium Azide.
Isotype	IgG
Storage Instruction	Store at -20°C for up to 1 year from the date of receipt, and avoid repeat freeze-thaw cycles.

TARGET INFORMATION

Gene ID	1814
Gene Symbol	DRD3
Uniprot ID	DRD3_HUMAN
Immunogen	Synthesized peptide derived from D3DR. at amino acid range: 181-230
Immunogen Region	181-230 Internal
Specificity	DRD3 polyclonal antibody (D (3 Dopamine Receptor) binds to endogenous D (3 Dopamine Receptor at the amino acid region 181-230 Internal.
Immunogen Sequence	



Western blot analysis of HeLa cells using DRD3 Polyclonal Antibody. Secondary antibody was diluted at 1:20000

This product is suitable for in-vitro studies under the RESEARCH USE ONLY [RUO] licence. This product must not be used as for diagnostic or other medical purposes.
St John's Laboratory Ltd, Knowledge Dock Business Centre, University Way, London, E16 2RD | Tel: 0208 223 3081