

Anti-APOA1 antibody (81-130 Internal) (STJ96804)

STJ96804

GENERAL INFORMATION

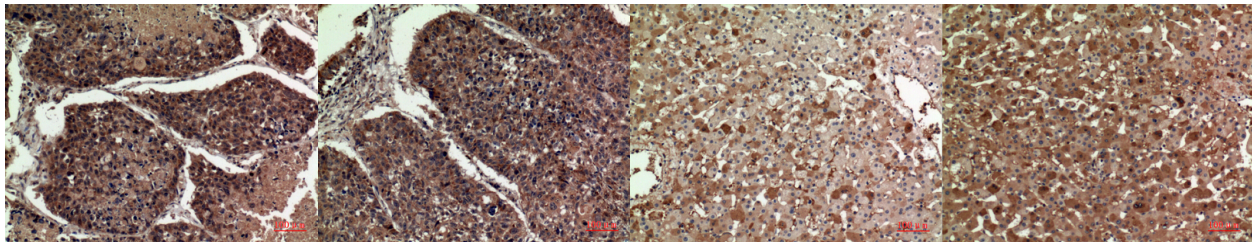
| | |
|--------------------------|---|
| Product Type | Primary antibodies |
| Short Description | Rabbit polyclonal antibody anti-Apolipoprotein A-I (81-130 Internal) is suitable for use in Western Blot, Immunohistochemistry, Immunofluorescence and ELISA research applications. |
| Applications | WB, IHC-P, IF-P, ELISA |
| Host/Source | Rabbit |
| Reactivity | Human, Mouse |

PRODUCT PROPERTIES

| | |
|----------------------------|--|
| Clonality | Polyclonal |
| Clone ID | |
| Concentration | 1 mg/mL |
| Conjugation | Unconjugated |
| Purification | The antibody was affinity-purified from rabbit anti-serum by affinity-chromatography. |
| Dilution Range | WB 1:500-1:2000 IHC 1:100-1:300 ELISA 1:20000 |
| Formulation | PBS, 50% Glycerol, 0.5% BSA and 0.02% Sodium Azide. |
| Isotype | IgG |
| Storage Instruction | Store at -20°C for up to 1 year from the date of receipt, and avoid repeat freeze-thaw cycles. |

TARGET INFORMATION

| | |
|---------------------------|---|
| Gene ID | 335 |
| Gene Symbol | APOA1 |
| Uniprot ID | APOA1_HUMAN |
| Immunogen | The antiserum was produced against synthesized peptide derived from the Internal region of human APOA1 at amino acid range 81-130 |
| Immunogen Region | 81-130 Internal |
| Specificity | APOA1 polyclonal antibody (Apolipoprotein A-I) binds to endogenous Apolipoprotein A-I at the amino acid region 81-130 Internal. |
| Immunogen Sequence | |



Immunohistochemical analysis of paraffin-embedded human-lung, antibody was diluted at 1:100

Immunohistochemical analysis of paraffin-embedded human-lung, antibody was diluted at 1:100

Immunohistochemical analysis of paraffin-embedded human-liver, antibody was diluted at 1:100

Immunohistochemical analysis of paraffin-embedded human-liver, antibody was diluted at 1:100

This product is suitable for in-vitro studies under the RESEARCH USE ONLY [RUO] licence. This product must not be used as for diagnostic or other medical purposes.
St John's Laboratory Ltd, Knowledge Dock Business Centre, University Way, London, E16 2RD | Tel: 0208 223 3081