

Anti-PPIB antibody (151-200 C-Term) (STJ96801)

STJ96801

GENERAL INFORMATION

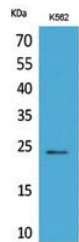
Product Type	Primary antibodies
Short Description	Rabbit polyclonal antibody anti-Peptidyl-Prolyl Cis-Trans Isomerase B (151-200 C-Term) is suitable for use in Western Blot and ELISA research applications.
Applications	WB, ELISA
Host/Source	Rabbit
Reactivity	Human, Mouse, Rat

PRODUCT PROPERTIES

Clonality	Polyclonal
Clone ID	
Concentration	1 mg/mL
Conjugation	Unconjugated
Purification	The antibody was affinity-purified from rabbit anti-serum by affinity-chromatography.
Dilution Range	WB 1:500-1:2000 ELISA 1:20000
Formulation	PBS, 50% Glycerol, 0.5% BSA and 0.02% Sodium Azide.
Isotype	IgG
Storage Instruction	Store at -20°C for up to 1 year from the date of receipt, and avoid repeat freeze-thaw cycles.

TARGET INFORMATION

Gene ID	5479
Gene Symbol	PPIB
Uniprot ID	PPIB_HUMAN
Immunogen	The antiserum was produced against synthesized peptide derived from the C-terminal region of human PPIB at amino acid range 151-200
Immunogen Region	151-200 C-Term
Specificity	PPIB polyclonal antibody (Peptidyl-Prolyl Cis-Trans Isomerase B) binds to endogenous Peptidyl-Prolyl Cis-Trans Isomerase B at the amino acid region 151-200 C-Term.
Immunogen Sequence	



Western blot analysis of K562 cells using CyPB Polyclonal Antibody. Secondary antibody was diluted at 1:20000

This product is suitable for in-vitro studies under the RESEARCH USE ONLY [RUO] licence. This product must not be used as for diagnostic or other medical purposes.
St John's Laboratory Ltd, Knowledge Dock Business Centre, University Way, London, E16 2RD | Tel: 0208 223 3081