

## Anti-Tubulin Alpha antibody (STJ96796)

STJ96796

### GENERAL INFORMATION

<b>Product Type</b>	Primary antibodies
<b>Short Description</b>	Rabbit polyclonal antibody anti-Tubulin alpha-1A chain and Tubulin alpha-1B chain and Tubulin alpha-1C chain is suitable for use in Western Blot, Immunohistochemistry, Immunofluorescence and ELISA research applications.
<b>Applications</b>	WB, IHC-P, IF-P, ELISA
<b>Host/Source</b>	Rabbit
<b>Reactivity</b>	Human, Mouse, Rat

### PRODUCT PROPERTIES

<b>Clonality</b>	Polyclonal
<b>Clone ID</b>	
<b>Concentration</b>	1 mg/mL
<b>Conjugation</b>	Unconjugated
<b>Purification</b>	The antibody was affinity-purified from rabbit anti-serum by affinity-chromatography.
<b>Dilution Range</b>	WB 1:500-1:2000 IHC 1:100-1:300 ELISA 1:20000
<b>Formulation</b>	PBS, 50% Glycerol, 0.5% BSA and 0.02% Sodium Azide.
<b>Isotype</b>	IgG
<b>Storage Instruction</b>	Store at -20°C for up to 1 year from the date of receipt, and avoid repeat freeze-thaw cycles.

### TARGET INFORMATION

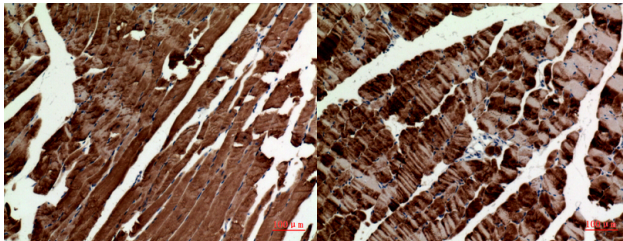
**Gene ID** [10376](#)  
[84790](#)  
[7846](#)  
[TUBA1B](#)  
[TUBA1C](#)  
[TBA1B\\_HUMAN](#)  
[TBA1C\\_HUMAN](#)  
[TBA1A\\_HUMAN](#)

**Immunogen** Synthesized peptide derived from human Tubulin Alpha around the non-acetylation site of K112.

**Immunogen Region**

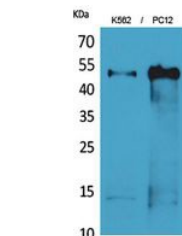
**Specificity** Tubulin Alpha polyclonal antibody (Tubulin alpha-1A chain and Tubulin alpha-1B chain and Tubulin alpha-1C chain) binds to endogenous Tubulin alpha-1A chain and Tubulin alpha-1B chain and Tubulin alpha-1C chain.

**Immunogen Sequence**



Immunohistochemical analysis of paraffin-embedded mouse-muscle, antibody was diluted at 1:100

Immunohistochemical analysis of paraffin-embedded mouse-muscle, antibody was diluted at 1:100



Western blot analysis of K562, PC12 cells using Tubulin Alpha Polyclonal Antibody. Secondary antibody was diluted at 1:20000

This product is suitable for in-vitro studies under the RESEARCH USE ONLY [RUO] licence. This product must not be used as for diagnostic or other medical purposes.  
 St John's Laboratory Ltd, Knowledge Dock Business Centre, University Way, London, E16 2RD | Tel: 0208 223 3081