

Anti-KLF1 antibody (231-280) (STJ96790)

STJ96790

GENERAL INFORMATION

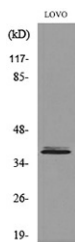
Product Type	Primary antibodies
Short Description	Rabbit polyclonal antibody anti-Krueppel-Like Factor 1 (231-280) is suitable for use in Western Blot and ELISA research applications.
Applications	WB, ELISA
Host/Source	Rabbit
Reactivity	Human, Rat, Mouse

PRODUCT PROPERTIES

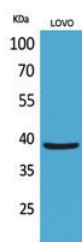
Clonality	Polyclonal
Clone ID	
Concentration	1 mg/mL
Conjugation	Unconjugated
Purification	The antibody was affinity-purified from rabbit anti-serum by affinity-chromatography.
Dilution Range	WB 1:500-1:2000 ELISA 1:20000
Formulation	PBS, 50% Glycerol, 0.5% BSA and 0.02% Sodium Azide.
Isotype	IgG
Storage	Store at -20°C for up to 1 year from the date of receipt, and avoid repeat freeze-thaw cycles.
Instruction	

TARGET INFORMATION

Gene ID	10661
Gene Symbol	KLF1
Uniprot ID	KLF1_HUMAN
Immunogen	The antiserum was produced against synthesized peptide derived from human KLF1 around the non-acetylation site of Lys274 at amino acid range 231-280
Immunogen Region	231-280
Specificity	KLF1 polyclonal antibody (Krueppel-Like Factor 1) binds to endogenous Krueppel-Like Factor 1 at the amino acid region 231-280.
Immunogen Sequence	



Western blot analysis of lysate from LOVO cells, using KLF1 Antibody.



Western blot analysis of LOVO cells using EKLFPolyclonal Antibody. Secondary antibody was diluted at 1:20000 cells nucleus extracted by Minute TM Cytoplasmic and Nuclear Fractionation kit (SC-003, Inventibiotech, MN, USA).

This product is suitable for in-vitro studies under the RESEARCH USE ONLY [RUO] licence. This product must not be used as for diagnostic or other medical purposes.
St John's Laboratory Ltd, Knowledge Dock Business Centre, University Way, London, E16 2RD | Tel: 0208 223 3081