

Anti-CD158b2/j antibody (131-180 Internal) (STJ96772)

STJ96772

GENERAL INFORMATION

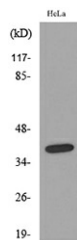
Product Type	Primary antibodies
Short Description	Rabbit polyclonal antibody anti-Killer cell immunoglobulin-like receptor 2DL3 and Killer cell immunoglobulin-like receptor 2DS2 (131-180 Internal) is suitable for use in Western Blot and ELISA research applications.
Applications	WB, ELISA
Host/Source	Rabbit
Reactivity	Human, Rat, Mouse

PRODUCT PROPERTIES

Clonality	Polyclonal
Clone ID	
Concentration	1 mg/mL
Conjugation	Unconjugated
Purification	The antibody was affinity-purified from rabbit anti-serum by affinity-chromatography.
Dilution	WB 1:500-1:2000
Range	ELISA 1:20000
Formulation	PBS, 50% Glycerol, 0.5% BSA and 0.02% Sodium Azide.
Isotype	IgG
Storage	Store at -20°C for up to 1 year from the date of receipt, and avoid repeat freeze-thaw cycles.
Instruction	

TARGET INFORMATION

Gene ID	3804
	100132285
Gene Symbol	KIR2DL3
	KIR2DS2
Uniprot ID	K12L3_HUMAN
	K12S2_HUMAN
Immunogen	The antiserum was produced against synthesized peptide derived from the Internal region of human KIR2DL3/KIR2DS2 at amino acid range 131-180
Immunogen Region	131-180 Internal
Specificity	CD158b2/j polyclonal antibody (Killer cell immunoglobulin-like receptor 2DL3 and Killer cell immunoglobulin-like receptor 2DS2) binds to endogenous Killer cell immunoglobulin-like receptor 2DL3 and Killer cell immunoglobulin-like receptor 2DS2 at the
Immunogen Sequence	



Western blot analysis of lysate from HeLa cells, using KIR2DL3/KIR2DS2 Antibody.



Western blot analysis of HeLa cells using CD158b2/j Polyclonal Antibody. Secondary antibody was diluted at 1:20000

This product is suitable for in-vitro studies under the RESEARCH USE ONLY [RUO] licence. This product must not be used as for diagnostic or other medical purposes.
 St John's Laboratory Ltd, Knowledge Dock Business Centre, University Way, London, E16 2RD | Tel: 0208 223 3081