

Anti-SLC2A5 antibody (21-70 N-Term) (STJ96753)

STJ96753

GENERAL INFORMATION

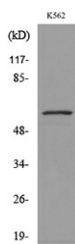
Product Type	Primary antibodies
Short Description	Rabbit polyclonal antibody anti-Solute Carrier Family 2-Facilitated Glucose Transporter Member 5 (21-70 N-Term) is suitable for use in Western Blot and ELISA research applications.
Applications	WB, ELISA
Host/Source	Rabbit
Reactivity	Human, Rat, Mouse

PRODUCT PROPERTIES

Clonality	Polyclonal
Clone ID	
Concentration	1 mg/mL
Conjugation	Unconjugated
Purification	The antibody was affinity-purified from rabbit anti-serum by affinity-chromatography.
Dilution	WB 1:500-1:2000
Range	ELISA 1:20000
Formulation	PBS, 50% Glycerol, 0.5% BSA and 0.02% Sodium Azide.
Isotype	IgG
Storage Instruction	Store at -20°C for up to 1 year from the date of receipt, and avoid repeat freeze-thaw cycles.

TARGET INFORMATION

Gene ID	6518
Gene Symbol	SLC2A5
Uniprot ID	GTR5_HUMAN
Immunogen	The antiserum was produced against synthesized peptide derived from the N-terminal region of human SLC2A5 at amino acid range 31-80
Immunogen Region	21-70 N-Term
Specificity	SLC2A5 polyclonal antibody (Solute Carrier Family 2-Facilitated Glucose Transporter Member 5) binds to endogenous Solute Carrier Family 2-Facilitated Glucose Transporter Member 5 at the amino acid region 21-70 N-Term.
Immunogen Sequence	



Western blot analysis of lysate from K562 cells, using SLC2A5 Antibody.



Western blot analysis of K562 cells using Glut5 Polyclonal Antibody. Secondary antibody was diluted at 1:20000

This product is suitable for in-vitro studies under the RESEARCH USE ONLY [RUO] licence. This product must not be used as for diagnostic or other medical purposes.
 St John's Laboratory Ltd, Knowledge Dock Business Centre, University Way, London, E16 2RD | Tel: 0208 223 3081