

Anti-IL2RG antibody (Internal) (STJ96745)

STJ96745

GENERAL INFORMATION

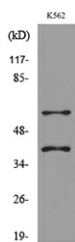
Product Type	Primary antibodies
Short Description	Rabbit polyclonal antibody anti-Cytokine Receptor Common Subunit Gamma (Internal) is suitable for use in Western Blot and ELISA research applications.
Applications	WB, ELISA
Host/Source	Rabbit
Reactivity	Human, Rat, Mouse

PRODUCT PROPERTIES

Clonality	Polyclonal
Clone ID	
Concentration	1 mg/mL
Conjugation	Unconjugated
Purification	The antibody was affinity-purified from rabbit anti-serum by affinity-chromatography.
Dilution Range	WB 1:500-1:2000 ELISA 1:20000
Formulation	PBS, 50% Glycerol, 0.5% BSA and 0.02% Sodium Azide.
Isotype	IgG
Storage	Store at -20°C for up to 1 year from the date of receipt, and avoid repeat freeze-thaw cycles.
Instruction	

TARGET INFORMATION

Gene ID	3561
Gene Symbol	IL2RG
Uniprot ID	IL2RG_HUMAN
Immunogen	The antiserum was produced against synthesized peptide derived from the Internal region of human IL2RG at amino acid range 101-150
Immunogen Region	Internal
Specificity	IL2RG polyclonal antibody (Cytokine Receptor Common Subunit Gamma) binds to endogenous Cytokine Receptor Common Subunit Gamma at the amino acid region Internal.
Immunogen Sequence	



Western blot analysis of lysate from K562 cells, using IL2RG Antibody.



Western blot analysis of K562 cells using IL-2R Gamma Polyclonal Antibody. Secondary antibody was diluted at 1:20000.

This product is suitable for in-vitro studies under the RESEARCH USE ONLY [RUO] licence. This product must not be used as for diagnostic or other medical purposes.
St John's Laboratory Ltd, Knowledge Dock Business Centre, University Way, London, E16 2RD | Tel: 0208 223 3081