

Anti-APAF1 antibody (501-550 Internal) (STJ96743)

STJ96743

GENERAL INFORMATION

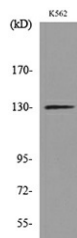
| | |
|--------------------------|--|
| Product Type | Primary antibodies |
| Short Description | Rabbit polyclonal antibody anti-Apoptotic Protease-Activating Factor 1 (501-550 Internal) is suitable for use in Western Blot, Immunohistochemistry, Immunofluorescence and ELISA research applications. |
| Applications | WB, IHC-P, IF-P, ELISA |
| Host/Source | Rabbit |
| Reactivity | Human, Mouse, Rat |

PRODUCT PROPERTIES

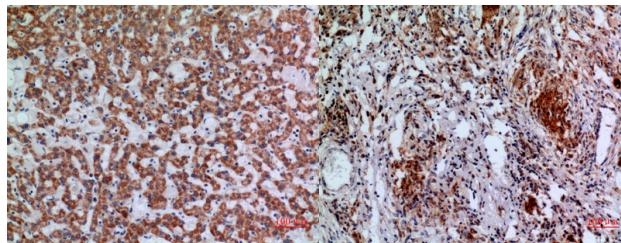
| | |
|----------------------------|---|
| Clonality | Polyclonal |
| Clone ID | |
| Concentration | 1 mg/mL |
| Conjugation | Unconjugated |
| Purification | The antibody was affinity-purified from rabbit anti-serum by affinity-chromatography. |
| Dilution Range | WB 1:500-1:2000 IHC 1:100-1:300 ELISA 1:20000 |
| Formulation | PBS, 50% Glycerol, 0.5% BSA and 0.02% Sodium Azide. |
| Isotype | IgG |
| Storage Instruction | Store at 20°C for up to 1 year from the date of receipt, and avoid repeat freeze-thaw cycles. |

TARGET INFORMATION

| | |
|---------------------------|--|
| Gene ID | 317 |
| Gene Symbol | APAF1 |
| Uniprot ID | APAF_HUMAN |
| Immunogen | The antiserum was produced against synthesized peptide derived from the Internal region of human APAF1 at amino acid range 501-550 |
| Immunogen Region | 501-550 Internal |
| Specificity | APAF1 polyclonal antibody (Apoptotic Protease-Activating Factor 1) binds to endogenous Apoptotic Protease-Activating Factor 1 at the amino acid region 501-550 Internal. |
| Immunogen Sequence | |

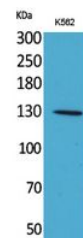


Western blot analysis of lysate from K562 cells, using APAF1 Antibody.



Immunohistochemical analysis of paraffin-embedded human-liver, antibody was diluted at 1:100

Immunohistochemical analysis of paraffin-embedded human-lung, antibody was diluted at 1:100



Western blot analysis of K562 cells using Apaf-1 Polyclonal Antibody. Secondary antibody was diluted at 1:20000

This product is suitable for in-vitro studies under the RESEARCH USE ONLY [RUO] licence. This product must not be used as for diagnostic or other medical purposes.
St John's Laboratory Ltd, Knowledge Dock Business Centre, University Way, London, E16 2RD | Tel: 0208 223 3081