

Anti-CGRRF1 antibody (C-Term) (STJ96731)

STJ96731

GENERAL INFORMATION

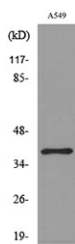
Product Type	Primary antibodies
Short Description	Rabbit polyclonal antibody anti-Cell Growth Regulator With Ring Finger Domain Protein 1 (C-Term) is suitable for use in Western Blot and ELISA research applications.
Applications	WB, ELISA
Host/Source	Rabbit
Reactivity	Human, Rat, Mouse

PRODUCT PROPERTIES

Clonality	Polyclonal
Clone ID	
Concentration	1 mg/mL
Conjugation	Unconjugated
Purification	The antibody was affinity-purified from rabbit anti-serum by affinity-chromatography.
Dilution	WB 1:500-1:2000
Range	ELISA 1:20000
Formulation	PBS, 50% Glycerol, 0.5% BSA and 0.02% Sodium Azide.
Isotype	IgG
Storage	Store at -20°C for up to 1 year from the date of receipt, and avoid repeat freeze-thaw cycles.
Instruction	

TARGET INFORMATION

Gene ID	10668
Gene Symbol	CGRRF1
Uniprot ID	CGRF1_HUMAN
Immunogen	The antiserum was produced against synthesized peptide derived from the C-terminal region of human CGRRF1 at amino acid range 283-332
Immunogen Region	C-Term
Specificity	CGRRF1 polyclonal antibody (Cell Growth Regulator With Ring Finger Domain Protein 1) binds to endogenous Cell Growth Regulator With Ring Finger Domain Protein 1 at the amino acid region C-Term.
Immunogen Sequence	



Western blot analysis of lysate from A549 cells, using CGRRF1 Antibody.



Western blot analysis of A549 cells using CGR19 Polyclonal Antibody. Secondary antibody was diluted at 1:20000

This product is suitable for in-vitro studies under the RESEARCH USE ONLY [RUO] licence. This product must not be used as for diagnostic or other medical purposes.
 St John's Laboratory Ltd, Knowledge Dock Business Centre, University Way, London, E16 2RD | Tel: 0208 223 3081