

Anti-IGFBP6 antibody (101-150 Internal) (STJ96726)

STJ96726

GENERAL INFORMATION

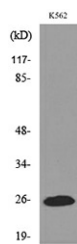
Product Type	Primary antibodies
Short Description	Rabbit polyclonal antibody anti-Insulin-Like Growth Factor-Binding Protein 6 (101-150 Internal) is suitable for use in Western Blot and ELISA research applications.
Applications	WB, ELISA
Host/Source	Rabbit
Reactivity	Human, Rat, Mouse

PRODUCT PROPERTIES

Clonality	Polyclonal
Clone ID	
Concentration	1 mg/mL
Conjugation	Unconjugated
Purification	The antibody was affinity-purified from rabbit anti-serum by affinity-chromatography.
Dilution Range	WB 1:500-1:2000 ELISA 1:20000
Formulation	PBS, 50% Glycerol, 0.5% BSA and 0.02% Sodium Azide.
Isotype	IgG
Storage	Store at -20°C for up to 1 year from the date of receipt, and avoid repeat freeze-thaw cycles.
Instruction	

TARGET INFORMATION

Gene ID	3489
Gene Symbol	IGFBP6
Uniprot ID	IBP6_HUMAN
Immunogen	The antiserum was produced against synthesized peptide derived from the Internal region of human IGFBP6 at amino acid range 101-150
Immunogen Region	101-150 Internal
Specificity	IGFBP6 polyclonal antibody (Insulin-Like Growth Factor-Binding Protein 6) binds to endogenous Insulin-Like Growth Factor-Binding Protein 6 at the amino acid region 101-150 Internal.
Immunogen Sequence	



Western blot analysis of lysate from K562 cells, using IGFBP6 Antibody.



Western blot analysis of K562 cells using IGFBP6 Polyclonal Antibody. Secondary antibody was diluted at 1:20000.

This product is suitable for in-vitro studies under the RESEARCH USE ONLY [RUO] licence. This product must not be used as for diagnostic or other medical purposes.
St John's Laboratory Ltd, Knowledge Dock Business Centre, University Way, London, E16 2RD | Tel: 0208 223 3081