

Anti-ENPP2 antibody (401-450 Internal) (STJ96724)

STJ96724

GENERAL INFORMATION

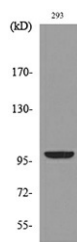
Product Type	Primary antibodies
Short Description	Rabbit polyclonal antibody anti-Ectonucleotide Pyrophosphatase/Phosphodiesterase Family Member 2 (401-450 Internal) is suitable for use in Western Blot and ELISA research applications.
Applications	WB, ELISA
Host/Source	Rabbit
Reactivity	Human, Mouse, Rat

PRODUCT PROPERTIES

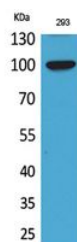
Clonality	Polyclonal
Clone ID	
Concentration	1 mg/mL
Conjugation	Unconjugated
Purification	The antibody was affinity-purified from rabbit anti-serum by affinity-chromatography.
Dilution	WB 1:500-1:2000
Range	ELISA 1:20000
Formulation	PBS, 50% Glycerol, 0.5% BSA and 0.02% Sodium Azide.
Isotype	IgG
Storage Instruction	Store at -20°C for up to 1 year from the date of receipt, and avoid repeat freeze-thaw cycles.

TARGET INFORMATION

Gene ID	5168
Gene Symbol	ENPP2
Uniprot ID	ENPP2_HUMAN
Immunogen	The antiserum was produced against synthesized peptide derived from the Internal region of human ENPP2 at amino acid range 401-450
Immunogen Region	401-450 Internal
Specificity	ENPP2 polyclonal antibody (Ectonucleotide Pyrophosphatase/Phosphodiesterase Family Member 2) binds to endogenous Ectonucleotide Pyrophosphatase/Phosphodiesterase Family Member 2 at the amino acid region 401-450 Internal.
Immunogen Sequence	



Western blot analysis of lysate from 293 cells, using ENPP2 Antibody.



Western blot analysis of 293 cells using Autotaxin Polyclonal Antibody. Secondary antibody was diluted at 1:20000

This product is suitable for in-vitro studies under the RESEARCH USE ONLY [RUO] licence. This product must not be used as for diagnostic or other medical purposes.
 St John's Laboratory Ltd, Knowledge Dock Business Centre, University Way, London, E16 2RD | Tel: 0208 223 3081