

## Anti-RUNX2 antibody (191-240 Internal) (STJ96721)

STJ96721

### GENERAL INFORMATION

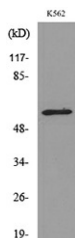
<b>Product Type</b>	Primary antibodies
<b>Short Description</b>	Rabbit polyclonal antibody anti-Runt-Related Transcription Factor 2 (191-240 Internal) is suitable for use in Immunofluorescence, Immunocytochemistry, Western Blot and ELISA research applications.
<b>Applications</b>	IF, ICC, WB, ELISA
<b>Host/Source</b>	Rabbit
<b>Reactivity</b>	Human, Mouse, Rat

### PRODUCT PROPERTIES

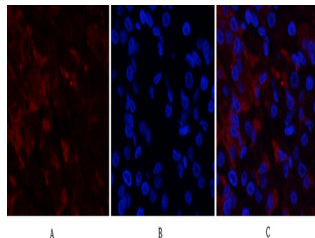
<b>Clonality</b>	Polyclonal
<b>Clone ID</b>	
<b>Concentration</b>	1 mg/mL
<b>Conjugation</b>	Unconjugated
<b>Purification</b>	The antibody was affinity-purified from rabbit anti-serum by affinity-chromatography.
<b>Dilution</b>	IF 1:50-200
<b>Range</b>	WB 1:500-1:2000 ELISA 1:20000
<b>Formulation</b>	PBS, 50% Glycerol, 0.5% BSA and 0.02% Sodium Azide.
<b>Isotype</b>	IgG
<b>Storage Instruction</b>	Store at -20°C for up to 1 year from the date of receipt, and avoid repeat freeze-thaw cycles.

### TARGET INFORMATION

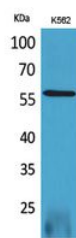
<b>Gene ID</b>	860
<b>Gene Symbol</b>	RUNX2
<b>Uniprot ID</b>	RUNX2_HUMAN
<b>Immunogen</b>	The antiserum was produced against synthesized peptide derived from the Internal region of human RUNX2 at amino acid range 201-250
<b>Immunogen Region</b>	191-240 Internal
<b>Specificity</b>	RUNX2 polyclonal antibody (Runt-Related Transcription Factor 2) binds to endogenous Runt-Related Transcription Factor 2 at the amino acid region 191-240 Internal.
<b>Immunogen Sequence</b>	



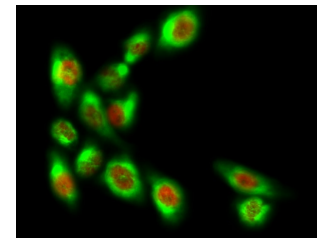
Western blot analysis of lysate from K562 cells, using RUNX2 Antibody.



Immunofluorescence analysis of human-stomach tissue. 1. RUNX2 Polyclonal Antibody (red) was diluted at 1:200 (4°C, overnight). 2. Cy3 labeled Secondary antibody was diluted at 1:300 (room temperature, 50min). 3. Picture B: DAPI (blue) 10min. Picture A: Target. Picture C: merge of A+B



Western blot analysis of K562 cells using RUNX2 Polyclonal Antibody. Secondary antibody was diluted at 1:20000



Immunofluorescence analysis of HeLa cell. 1. RUNX2 Polyclonal Antibody (red) was diluted at 1:200 (4°C overnight). NSE monoclonal antibody (13E2) (green) was diluted at 1:200 (4°C overnight). 2. Goat Anti Rabbit Alexa Fluor 594 Catalog: (NA was diluted at 1:1000 (room temperature, 50min). Goat Anti Mouse Alexa Fluor 488 Catalog: (NA was diluted at 1:1000 (room temperature, 50min).

This product is suitable for in-vitro studies under the RESEARCH USE ONLY [RUO] licence. This product must not be used as for diagnostic or other medical purposes.  
St John's Laboratory Ltd, Knowledge Dock Business Centre, University Way, London, E16 2RD | Tel: 0208 223 3081