

Anti-SMAD1 antibody (150-230) (STJ96712)

STJ96712

GENERAL INFORMATION

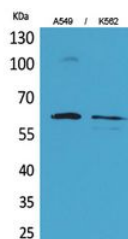
Product Type	Primary antibodies
Short Description	Rabbit polyclonal antibody anti-Mothers Against Decapentaplegic Homolog 1 (150-230) is suitable for use in Western Blot and ELISA research applications.
Applications	WB, ELISA
Host/Source	Rabbit
Reactivity	Human, Mouse, Rat

PRODUCT PROPERTIES

Clonality	Polyclonal
Clone ID	
Concentration	1 mg/mL
Conjugation	Unconjugated
Purification	The antibody was affinity-purified from rabbit anti-serum by affinity-chromatography.
Dilution Range	WB 1:500-1:2000 ELISA 1:20000
Formulation	PBS, 50% Glycerol, 0.5% BSA and 0.02% Sodium Azide.
Isotype	IgG
Storage Instruction	Store at -20°C for up to 1 year from the date of receipt, and avoid repeat freeze-thaw cycles.

TARGET INFORMATION

Gene ID	4086
Gene Symbol	SMAD1
Uniprot ID	SMAD1_HUMAN
Immunogen	Synthesized peptide derived from Smad1. at amino acid range: 150-230
Immunogen Region	150-230
Specificity	SMAD1 polyclonal antibody (Mothers Against Decapentaplegic Homolog 1) binds to endogenous Mothers Against Decapentaplegic Homolog 1 at the amino acid region 150-230.
Immunogen Sequence	



Western blot analysis of A549, K562 cells using Smad1 Polyclonal Antibody. Secondary antibody was diluted at 1:20000