

Anti-TUBA1A antibody (1-50) (STJ96710)

STJ96710

GENERAL INFORMATION

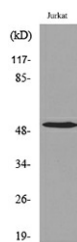
Product Type	Primary antibodies
Short Description	Rabbit polyclonal antibody anti-Tubulin Alpha-1a Chain (1-50) is suitable for use in Western Blot, Immunohistochemistry, Immunofluorescence and ELISA research applications.
Applications	WB, IHC-P, IF-P, ELISA
Host/Source	Rabbit
Reactivity	Human, Mouse, Rat

PRODUCT PROPERTIES

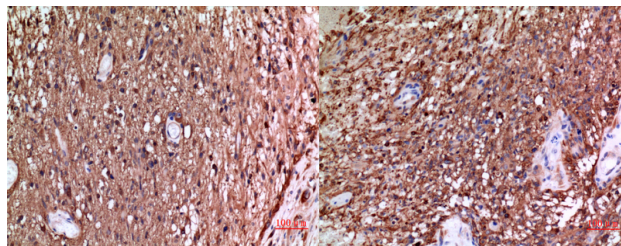
Clonality	Polyclonal
Clone ID	
Concentration	1 mg/mL
Conjugation	Unconjugated
Purification	The antibody was affinity-purified from rabbit anti-serum by affinity-chromatography.
Dilution Range	WB 1:500-1:2000 IHC 1:100-1:300 ELISA 1:20000
Formulation	PBS, 50% Glycerol, 0.5% BSA and 0.02% Sodium Azide.
Isotype	IgG
Storage Instruction	Store at -20°C for up to 1 year from the date of receipt, and avoid repeat freeze-thaw cycles.

TARGET INFORMATION

Gene ID	7846
Gene Symbol	TUBA1A
Uniprot ID	TBA1A_HUMAN
Immunogen	The antiserum was produced against synthesized peptide derived from human TUBA1A around the non-acetylation site of Lys40 at amino acid range 1-50
Immunogen Region	1-50
Specificity	TUBA1A polyclonal antibody (Tubulin Alpha-1a Chain) binds to endogenous Tubulin Alpha-1a Chain at the amino acid region 1-50.
Immunogen Sequence	

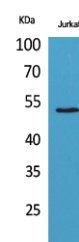


Western blot analysis of extracts from Jurkat cells, using TUBA1A (Ab-40) Antibody.



Immunohistochemical analysis of paraffin-embedded human-brain, antibody was diluted at 1:100

Immunohistochemical analysis of paraffin-embedded human-brain, antibody was diluted at 1:100



Western blot analysis of Jurkat cells using Tubulin Alpha Polyclonal Antibody. Antibody was diluted at 1:1000. Secondary antibody was diluted at 1:20000

This product is suitable for in-vitro studies under the RESEARCH USE ONLY [RUO] licence. This product must not be used as for diagnostic or other medical purposes.
St John's Laboratory Ltd, Knowledge Dock Business Centre, University Way, London, E16 2RD | Tel: 0208 223 3081