

Anti-MYOD1 antibody (61-110) (STJ96701)

STJ96701

GENERAL INFORMATION

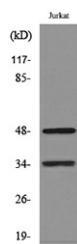
Product Type	Primary antibodies
Short Description	Rabbit polyclonal antibody anti-Myoblast Determination Protein 1 (61-110) is suitable for use in Western Blot and ELISA research applications.
Applications	WB, ELISA
Host/Source	Rabbit
Reactivity	Human, Mouse, Rat, Chicken

PRODUCT PROPERTIES

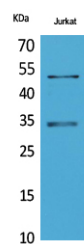
Clonality	Polyclonal
Clone ID	
Concentration	1 mg/mL
Conjugation	Unconjugated
Purification	The antibody was affinity-purified from rabbit anti-serum by affinity-chromatography.
Dilution Range	WB 1:500-1:2000 ELISA 1:20000
Formulation	PBS, 50% Glycerol, 0.5% BSA and 0.02% Sodium Azide.
Isotype	IgG
Storage	Store at -20°C for up to 1 year from the date of receipt, and avoid repeat freeze-thaw cycles.
Instruction	

TARGET INFORMATION

Gene ID	4654
Gene Symbol	MYOD1
Uniprot ID	MYOD1_HUMAN
Immunogen	The antiserum was produced against synthesized peptide derived from human MyoD around the non-acetylation site of Lys99/102 at amino acid range 61-110
Immunogen Region	61-110
Specificity	MYOD1 polyclonal antibody (Myoblast Determination Protein 1) binds to endogenous Myoblast Determination Protein 1 at the amino acid region 61-110.
Immunogen Sequence	



Western blot analysis of extracts from Jurkat cells, using MyoD (Ab-99/102) Antibody.



Western blot analysis of Jurkat cells using MyoD Polyclonal Antibody. Secondary antibody was diluted at 1:20000 cells nucleus extracted by Minute TM Cytoplasmic and Nuclear Fractionation kit (SC-003, Inventibiotech, MN, USA).

This product is suitable for in-vitro studies under the RESEARCH USE ONLY [RUO] licence. This product must not be used as for diagnostic or other medical purposes.
St John's Laboratory Ltd, Knowledge Dock Business Centre, University Way, London, E16 2RD | Tel: 0208 223 3081