

Anti-XRCC6 antibody (501-550) (STJ96698)

STJ96698

GENERAL INFORMATION

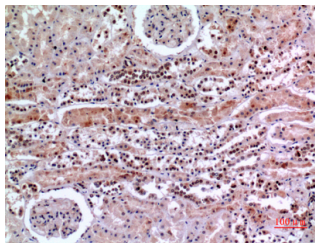
Product Type	Primary antibodies
Short Description	Rabbit polyclonal antibody anti-X-Ray Repair Cross-Complementing Protein 6 (501-550) is suitable for use in Western Blot, Immunohistochemistry, Immunofluorescence and ELISA research applications.
Applications	WB, IHC-P, IF-P, ELISA
Host/Source	Rabbit
Reactivity	Human, Rat, Mouse

PRODUCT PROPERTIES

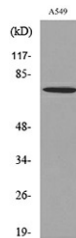
Clonality	Polyclonal
Clone ID	
Concentration	1 mg/mL
Conjugation	Unconjugated
Purification	The antibody was affinity-purified from rabbit anti-serum by affinity-chromatography.
Dilution Range	WB 1:500-1:2000 IHC 1:100-1:300 ELISA 1:20000
Formulation	PBS, 50% Glycerol, 0.5% BSA and 0.02% Sodium Azide.
Isotype	IgG
Storage Instruction	Store at -20°C for up to 1 year from the date of receipt, and avoid repeat freeze-thaw cycles.

TARGET INFORMATION

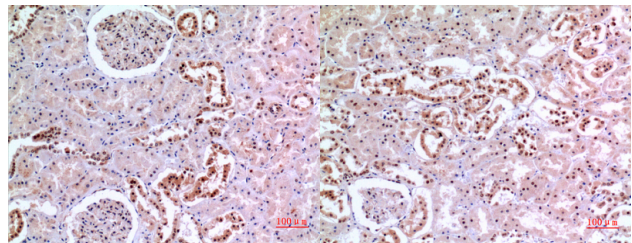
Gene ID	2547
Gene Symbol	XRCC6
Uniprot ID	XRCC6_HUMAN
Immunogen	The antiserum was produced against synthesized peptide derived from human Ku70 around the non-acetylation site of Lys539 at amino acid range 501-550
Immunogen Region	501-550
Specificity	XRCC6 polyclonal antibody (X-Ray Repair Cross-Complementing Protein 6) binds to endogenous X-Ray Repair Cross-Complementing Protein 6 at the amino acid region 501-550.
Immunogen Sequence	



Immunohistochemical analysis of paraffin-embedded human-kidney, antibody was diluted at 1:100



Western blot analysis of extracts from A549 cells, using Ku70 (Ab-539) Antibody.



Immunohistochemical analysis of paraffin-embedded human-kidney, antibody was diluted at 1:100

Immunohistochemical analysis of paraffin-embedded human-kidney, antibody was diluted at 1:100

This product is suitable for in-vitro studies under the RESEARCH USE ONLY [RUO] licence. This product must not be used as for diagnostic or other medical purposes.
St John's Laboratory Ltd, Knowledge Dock Business Centre, University Way, London, E16 2RD | Tel: 0208 223 3081