

Anti-Pan-KRT2 antibody (151-200) (STJ96694)

STJ96694

GENERAL INFORMATION

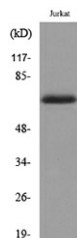
Product Type	Primary antibodies
Short Description	Rabbit polyclonal antibody anti-Pan-Keratin-Type II Cytoskeletal 2 Epidermal (151-200) is suitable for use in Western Blot, Immunohistochemistry, Immunofluorescence and ELISA research applications.
Applications	WB, IHC-P, IF-P, ELISA
Host/Source	Rabbit
Reactivity	Human, Mouse, Rat

PRODUCT PROPERTIES

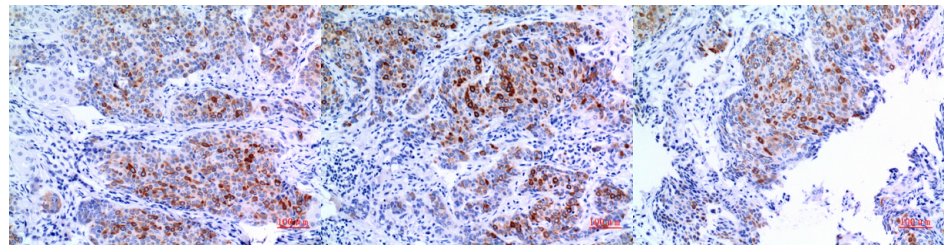
Clonality	Polyclonal
Clone ID	
Concentration	1 mg/mL
Conjugation	Unconjugated
Purification	The antibody was affinity-purified from rabbit anti-serum by affinity-chromatography.
Dilution Range	WB 1:500-1:2000 IHC 1:100-1:300 ELISA 1:20000
Formulation	PBS, 50% Glycerol, 0.5% BSA and 0.02% Sodium Azide.
Isotype	IgG
Storage Instruction	Store at -20°C for up to 1 year from the date of receipt, and avoid repeat freeze-thaw cycles.

TARGET INFORMATION

Gene ID	3849
Gene Symbol	KRT2
Uniprot ID	K22E_HUMAN
Immunogen	The antiserum was produced against synthesized peptide derived from human Keratin around the non-acetylation site of Lys185 AND OTHERS at amino acid range 151-200
Immunogen Region	151-200
Specificity	Pan-KRT2 polyclonal antibody (Keratin-Type II Cytoskeletal 2 Epidermal) binds to endogenous Keratin-Type II Cytoskeletal 2 Epidermal at the amino acid region 151-200.
Immunogen Sequence	



Western blot analysis of lysate from Jurkat cells, using Keratin-pan Antibody.



Immunohistochemical analysis of paraffin-embedded human-mammary-cancer, antibody was diluted at 1:100

Immunohistochemical analysis of paraffin-embedded human-mammary-cancer, antibody was diluted at 1:100

Immunohistochemical analysis of paraffin-embedded human-mammary-cancer, antibody was diluted at 1:100

This product is suitable for in-vitro studies under the RESEARCH USE ONLY [RUO] licence. This product must not be used as for diagnostic or other medical purposes.
St John's Laboratory Ltd, Knowledge Dock Business Centre, University Way, London, E16 2RD | Tel: 0208 223 3081