

Anti-ESR1 antibody (261-310) (STJ96688)

STJ96688

GENERAL INFORMATION

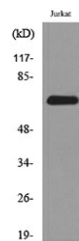
Product Type	Primary antibodies
Short Description	Rabbit polyclonal antibody anti-Estrogen Receptor (261-310) is suitable for use in Western Blot and ELISA research applications.
Applications	WB, ELISA
Host/Source	Rabbit
Reactivity	Human, Rat, Mouse

PRODUCT PROPERTIES

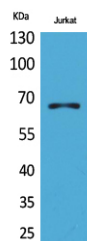
Clonality	Polyclonal
Clone ID	
Concentration	1 mg/mL
Conjugation	Unconjugated
Purification	The antibody was affinity-purified from rabbit anti-serum by affinity-chromatography.
Dilution Range	WB 1:500-1:2000 ELISA 1:20000
Formulation	PBS, 50% Glycerol, 0.5% BSA and 0.02% Sodium Azide.
Isotype	IgG
Storage Instruction	Store at -20°C for up to 1 year from the date of receipt, and avoid repeat freeze-thaw cycles.

TARGET INFORMATION

Gene ID	2099
Gene Symbol	ESR1
Uniprot ID	ESR1_HUMAN
Immunogen	The antiserum was produced against synthesized peptide derived from human ER-Alpha around the non-acetylation site of Lys303 at amino acid range 261-310
Immunogen Region	261-310
Specificity	ESR1 polyclonal antibody (Estrogen Receptor) binds to endogenous Estrogen Receptor at the amino acid region 261-310.
Immunogen Sequence	



Western blot analysis of extracts from Jurkat cells, using ER-Alpha (Ab-303) Antibody.



Western blot analysis of Jurkat cells using ER Alpha Polyclonal Antibody. Secondary antibody was diluted at 1:20000

This product is suitable for in-vitro studies under the RESEARCH USE ONLY [RUO] licence. This product must not be used as for diagnostic or other medical purposes.
St John's Laboratory Ltd, Knowledge Dock Business Centre, University Way, London, E16 2RD | Tel: 0208 223 3081