

## Anti-APEX1 antibody (STJ96686)

STJ96686

### GENERAL INFORMATION

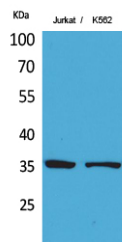
|                          |  |
|--------------------------|--|
| <b>Product Type</b>      | Primary antibodies   |
| <b>Short Description</b> | Rabbit polyclonal antibody anti-Dna (Apurinic Or Apyrimidinic Site Endonuclease is suitable for use in Western Blot and ELISA research applications. |
| <b>Applications</b>      | WB, ELISA  |
| <b>Host/Source</b>       | Rabbit   |
| <b>Reactivity</b>        | Human, Rat, Mouse  |

### PRODUCT PROPERTIES

|                       |  |
|-----------------------|--|
| <b>Clonality</b>      | Polyclonal   |
| <b>Clone ID</b>       |  |
| <b>Concentration</b>  | 1 mg/mL  |
| <b>Conjugation</b>    | Unconjugated   |
| <b>Purification</b>   | The antibody was affinity-purified from rabbit anti-serum by affinity-chromatography.          |
| <b>Dilution Range</b> | WB 1:500-1:2000<br>ELISA 1:20000   |
| <b>Formulation</b>    | PBS, 50% Glycerol, 0.5% BSA and 0.02% Sodium Azide.  |
| <b>Isotype</b>        | IgG  |
| <b>Storage</b>        | Store at -20°C for up to 1 year from the date of receipt, and avoid repeat freeze-thaw cycles. |
| <b>Instruction</b>    |  |

### TARGET INFORMATION

|                           |  |
|---------------------------|--|
| <b>Gene ID</b>            | 328  |
| <b>Gene Symbol</b>        | APEX1  |
| <b>Uniprot ID</b>         | APEX1_HUMAN  |
| <b>Immunogen</b>          | Synthesized peptide derived from human Ref-1 around the non-acetylation site of K6.  |
| <b>Immunogen Region</b>   |  |
| <b>Specificity</b>        | APEX1 polyclonal antibody (Dna- (Apurinic Or Apyrimidinic Site Endonuclease) binds to endogenous Dna- (Apurinic Or Apyrimidinic Site Endonuclease. |
| <b>Immunogen Sequence</b> |  |



Western blot analysis of Jurkat, K562 cells using Ref-1 Polyclonal Antibody. Secondary antibody was diluted at 1:20000