

Anti-IDH3A antibody (Internal) (STJ96683)

STJ96683

GENERAL INFORMATION

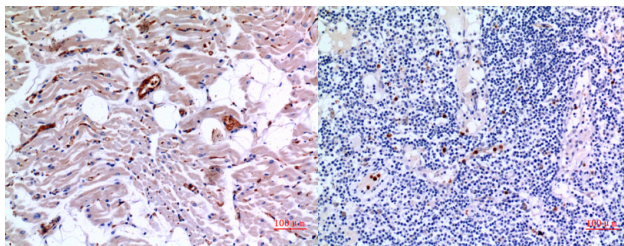
Product Type	Primary antibodies
Short Description	Rabbit polyclonal antibody anti-Isocitrate Dehydrogenase Nad Subunit Alpha-Mitochondrial (Internal) is suitable for use in Western Blot, Immunohistochemistry, Immunofluorescence and ELISA research applications.
Applications	WB, IHC-P, IF-P, ELISA
Host/Source	Rabbit
Reactivity	Human, Mouse, Rat

PRODUCT PROPERTIES

Clonality	Polyclonal
Clone ID	
Concentration	1 mg/mL
Conjugation	Unconjugated
Purification	The antibody was affinity-purified from rabbit anti-serum by affinity-chromatography.
Dilution Range	WB 1:500-1:2000 IHC 1:100-1:300 ELISA 1:20000
Formulation	PBS, 50% Glycerol, 0.5% BSA and 0.02% Sodium Azide.
Isotype	IgG
Storage Instruction	Store at -20°C for up to 1 year from the date of receipt, and avoid repeat freeze-thaw cycles.

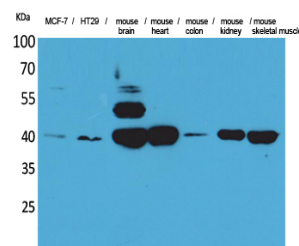
TARGET INFORMATION

Gene ID	3419
Gene Symbol	IDH3A
Uniprot ID	IDH3A_HUMAN
Immunogen	Synthesized peptide derived from the Internal region of human IDH3A.
Immunogen Region	Internal
Specificity	IDH3A polyclonal antibody (Isocitrate Dehydrogenase Nad Subunit Alpha-Mitochondrial) binds to endogenous Isocitrate Dehydrogenase Nad Subunit Alpha-Mitochondrial at the amino acid region Internal.
Immunogen Sequence	



Immunohistochemical analysis of paraffin-embedded human-heart, antibody was diluted at 1:100

Immunohistochemical analysis of paraffin-embedded human-lymph-gland, antibody was diluted at 1:100



Western blot analysis of MCF-7, HT29, mouse brain, mouse heart, mouse colon, mouse kidney, mouse skeletal muscle cells using IDH3A Polyclonal Antibody. Secondary antibody was diluted at 1:20000

This product is suitable for in-vitro studies under the RESEARCH USE ONLY [RUO] licence. This product must not be used as for diagnostic or other medical purposes.
St John's Laboratory Ltd, Knowledge Dock Business Centre, University Way, London, E16 2RD | Tel: 0208 223 3081