

Anti-IFNE antibody (151-200 C-Term) (STJ96669)

STJ96669

GENERAL INFORMATION

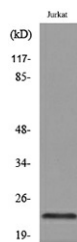
Product Type	Primary antibodies
Short Description	Rabbit polyclonal antibody anti-Interferon Epsilon (151-200 C-Term) is suitable for use in Western Blot and ELISA research applications.
Applications	WB, ELISA
Host/Source	Rabbit
Reactivity	Human, Rat, Mouse

PRODUCT PROPERTIES

Clonality	Polyclonal
Clone ID	
Concentration	1 mg/mL
Conjugation	Unconjugated
Purification	The antibody was affinity-purified from rabbit anti-serum by affinity-chromatography.
Dilution Range	WB 1:500-1:2000 ELISA 1:20000
Formulation	PBS, 50% Glycerol, 0.5% BSA and 0.02% Sodium Azide.
Isotype	IgG
Storage Instruction	Store at -20°C for up to 1 year from the date of receipt, and avoid repeat freeze-thaw cycles.

TARGET INFORMATION

Gene ID	338376
Gene Symbol	IFNE
Uniprot ID	IFNE_HUMAN
Immunogen	The antiserum was produced against synthesized peptide derived from the C-terminal region of human IFNE at amino acid range 159-208
Immunogen Region	151-200 C-Term
Specificity	IFNE polyclonal antibody (Interferon Epsilon) binds to endogenous Interferon Epsilon at the amino acid region 151-200 C-Term.
Immunogen Sequence	



Western blot analysis of lysate from Jurkat cells, using IFNE Antibody.



Western blot analysis of Jurkat cells using IFN-Epsilon Polyclonal Antibody. Secondary antibody was diluted at 1:20000

This product is suitable for in-vitro studies under the RESEARCH USE ONLY [RUO] licence. This product must not be used as for diagnostic or other medical purposes.
St John's Laboratory Ltd, Knowledge Dock Business Centre, University Way, London, E16 2RD | Tel: 0208 223 3081