

Anti-GDF5 antibody (351-400 Internal) (STJ96667)

STJ96667

GENERAL INFORMATION

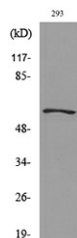
Product Type	Primary antibodies
Short Description	Rabbit polyclonal antibody anti-Growth/Differentiation Factor 5 (351-400 Internal) is suitable for use in Western Blot, Immunohistochemistry, Immunofluorescence and ELISA research applications.
Applications	WB, IHC-P, IF-P, ELISA
Host/Source	Rabbit
Reactivity	Human, Mouse, Rat

PRODUCT PROPERTIES

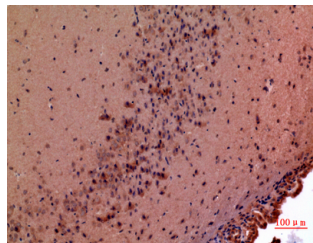
Clonality	Polyclonal
Clone ID	
Concentration	1 mg/mL
Conjugation	Unconjugated
Purification	The antibody was affinity-purified from rabbit anti-serum by affinity-chromatography.
Dilution Range	WB 1:500-1:2000 IHC 1:100-1:300 ELISA 1:20000
Formulation	PBS, 50% Glycerol, 0.5% BSA and 0.02% Sodium Azide.
Isotype	IgG
Storage Instruction	Store at -20°C for up to 1 year from the date of receipt, and avoid repeat freeze-thaw cycles.

TARGET INFORMATION

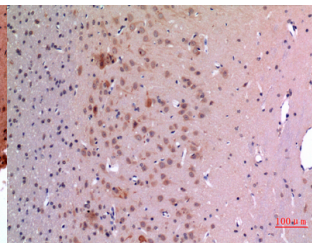
Gene ID	8200
Gene Symbol	GDF5
Uniprot ID	GDF5_HUMAN
Immunogen	The antiserum was produced against synthesized peptide derived from the Internal region of human GDF5 at amino acid range 361-410
Immunogen Region	351-400 Internal
Specificity	GDF5 polyclonal antibody (Growth/Differentiation Factor 5) binds to endogenous Growth/Differentiation Factor 5 at the amino acid region 351-400 Internal.
Immunogen Sequence	



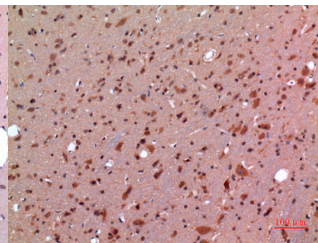
Western blot analysis of lysate from 293 cells, using GDF5 Antibody.



Immunohistochemical analysis of paraffin-embedded mouse-brain, antibody was diluted at 1:100



Immunohistochemical analysis of paraffin-embedded rat-brain, antibody was diluted at 1:100



Immunohistochemical analysis of paraffin-embedded rat-brain, antibody was diluted at 1:100

This product is suitable for in-vitro studies under the RESEARCH USE ONLY [RUO] licence. This product must not be used as for diagnostic or other medical purposes.
St John's Laboratory Ltd, Knowledge Dock Business Centre, University Way, London, E16 2RD | Tel: 0208 223 3081