

Anti-GDF9 antibody (401-450 C-Term) (STJ96666)

STJ96666

GENERAL INFORMATION

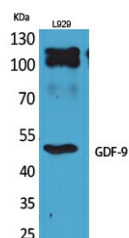
Product Type	Primary antibodies
Short Description	Rabbit polyclonal antibody anti-Growth/Differentiation Factor 9 (401-450 C-Term) is suitable for use in Western Blot and ELISA research applications.
Applications	WB, ELISA
Host/Source	Rabbit
Reactivity	Human, Mouse, Rat

PRODUCT PROPERTIES

Clonality	Polyclonal
Clone ID	
Concentration	1 mg/mL
Conjugation	Unconjugated
Purification	The antibody was affinity-purified from rabbit anti-serum by affinity-chromatography.
Dilution Range	WB 1:500-1:2000 ELISA 1:20000
Formulation	PBS, 50% Glycerol, 0.5% BSA and 0.02% Sodium Azide.
Isotype	IgG
Storage	Store at -20°C for up to 1 year from the date of receipt, and avoid repeat freeze-thaw cycles.
Instruction	

TARGET INFORMATION

Gene ID	2661
Gene Symbol	GDF9
Uniprot ID	GDF9_HUMAN
Immunogen	The antiserum was produced against synthesized peptide derived from the C-terminal region of human GDF9 at amino acid range 405-454
Immunogen Region	401-450 C-Term
Specificity	GDF9 polyclonal antibody (Growth/Differentiation Factor 9) binds to endogenous Growth/Differentiation Factor 9 at the amino acid region 401-450 C-Term.
Immunogen Sequence	



Western blot analysis of L929 cells using GDF-9 Polyclonal Antibody. Antibody was diluted at 1:1000. Secondary antibody was diluted at 1:20000.

This product is suitable for in-vitro studies under the RESEARCH USE ONLY [RUO] licence. This product must not be used as for diagnostic or other medical purposes.
St John's Laboratory Ltd, Knowledge Dock Business Centre, University Way, London, E16 2RD | Tel: 0208 223 3081