

Anti-IFNL1 antibody (121-170 Internal) (STJ96663)

STJ96663

GENERAL INFORMATION

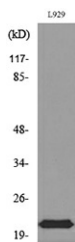
Product Type	Primary antibodies
Short Description	Rabbit polyclonal antibody anti-Interferon Lambda-1 (121-170 Internal) is suitable for use in Western Blot and ELISA research applications.
Applications	WB, ELISA
Host/Source	Rabbit
Reactivity	Human, Rat, Mouse

PRODUCT PROPERTIES

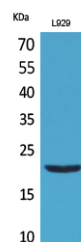
Clonality	Polyclonal
Clone ID	
Concentration	1 mg/mL
Conjugation	Unconjugated
Purification	The antibody was affinity-purified from rabbit anti-serum by affinity-chromatography.
Dilution Range	WB 1:500-1:2000 ELISA 1:20000
Formulation	PBS, 50% Glycerol, 0.5% BSA and 0.02% Sodium Azide.
Isotype	IgG
Storage Instruction	Store at -20°C for up to 1 year from the date of receipt, and avoid repeat freeze-thaw cycles.

TARGET INFORMATION

Gene ID	282618
Gene Symbol	IFNL1
Uniprot ID	IFNL1_HUMAN
Immunogen	The antiserum was produced against synthesized peptide derived from the Internal region of human IL29 at amino acid range 121-170
Immunogen Region	121-170 Internal
Specificity	IFNL1 polyclonal antibody (Interferon Lambda-1) binds to endogenous Interferon Lambda-1 at the amino acid region 121-170 Internal.
Immunogen Sequence	



Western blot analysis of lysate from L929 cells, using IL29 Antibody.



Western blot analysis of L929 cells using IL-29 Polyclonal Antibody. Secondary antibody was diluted at 1:20000.

This product is suitable for in-vitro studies under the RESEARCH USE ONLY [RUO] licence. This product must not be used as for diagnostic or other medical purposes.
St John's Laboratory Ltd, Knowledge Dock Business Centre, University Way, London, E16 2RD | Tel: 0208 223 3081