

Anti-VGF antibody (441-490 Internal) (STJ96661)

STJ96661

GENERAL INFORMATION

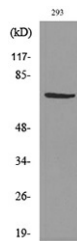
Product Type	Primary antibodies
Short Description	Rabbit polyclonal antibody anti-Neurosecretory Protein Vgf Cleaved Into-Neuroendocrine Regulatory Peptide-1 (441-490 Internal) is suitable for use in Western Blot, Immunohistochemistry, Immunofluorescence and ELISA research applications.
Applications	WB, IHC-P, IF-P, ELISA
Host/Source	Rabbit
Reactivity	Human, Mouse, Rat

PRODUCT PROPERTIES

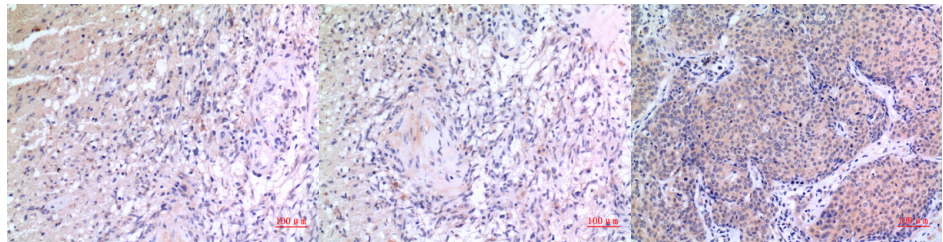
Clonality	Polyclonal
Clone ID	
Concentration	1 mg/mL
Conjugation	Unconjugated
Purification	The antibody was affinity-purified from rabbit anti-serum by affinity-chromatography.
Dilution Range	WB 1:500-1:2000 IHC 1:100-1:300 ELISA 1:20000
Formulation	PBS, 50% Glycerol, 0.5% BSA and 0.02% Sodium Azide.
Isotype	IgG
Storage Instruction	Store at 20°C for up to 1 year from the date of receipt, and avoid repeat freeze-thaw cycles.

TARGET INFORMATION

Gene ID	7425
Gene Symbol	VGF
Uniprot ID	VGF_HUMAN
Immunogen Region	The antiserum was produced against synthesized peptide derived from the Internal region of human VGF at amino acid range 451-500 441-490 Internal
Specificity	VGF polyclonal antibody (Neurosecretory Protein Vgf Cleaved Into-Neuroendocrine Regulatory Peptide-1) binds to endogenous Neurosecretory Protein Vgf Cleaved Into-Neuroendocrine Regulatory Peptide-1 at the amino acid region 441-490 Internal.
Immunogen Sequence	



Western blot analysis of lysate from 293 cells, using VGF Antibody.



Immunohistochemical analysis of paraffin-embedded human-brain, antibody was diluted at 1:100

Immunohistochemical analysis of paraffin-embedded human-brain, antibody was diluted at 1:100

Immunohistochemical analysis of paraffin-embedded human-mammary-cancer, antibody was diluted at 1:100

This product is suitable for in-vitro studies under the RESEARCH USE ONLY [RUO] licence. This product must not be used as for diagnostic or other medical purposes.
St John's Laboratory Ltd, Knowledge Dock Business Centre, University Way, London, E16 2RD | Tel: 0208 223 3081