

Anti-KLRC1 antibody (101-150 Internal) (STJ96653)

STJ96653

GENERAL INFORMATION

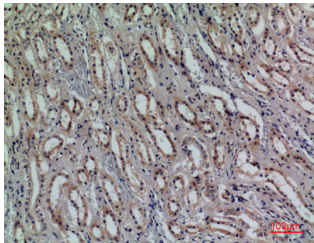
Product Type	Primary antibodies
Short Description	Rabbit polyclonal antibody anti-Nkg2-A/Nkg2-B Type II Integral Membrane Protein (101-150 Internal) is suitable for use in Western Blot, Immunohistochemistry, Immunofluorescence and ELISA research applications.
Applications	WB, IHC-P, IF-P, ELISA
Host/Source	Rabbit
Reactivity	Human, Rat, Mouse

PRODUCT PROPERTIES

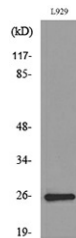
Clonality	Polyclonal
Clone ID	
Concentration	1 mg/mL
Conjugation	Unconjugated
Purification	The antibody was affinity-purified from rabbit anti-serum by affinity-chromatography.
Dilution Range	WB 1:500-1:2000 IHC 1:100-300 ELISA 1:20000
Formulation	PBS, 50% Glycerol, 0.5% BSA and 0.02% Sodium Azide.
Isotype	IgG
Storage Instruction	Store at -20°C for up to 1 year from the date of receipt, and avoid repeat freeze-thaw cycles.

TARGET INFORMATION

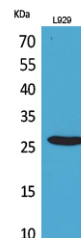
Gene ID	3821
Gene Symbol	KLRC1
Uniprot ID	NKG2A_HUMAN
Immunogen	The antiserum was produced against synthesized peptide derived from the Internal region of human KLRC1/2/3 at amino acid range 101-150
Immunogen Region	101-150 Internal
Specificity	KLRC1 polyclonal antibody (Nkg2-A/Nkg2-B Type II Integral Membrane Protein) binds to endogenous Nkg2-A/Nkg2-B Type II Integral Membrane Protein at the amino acid region 101-150 Internal.
Immunogen Sequence	



Immunohistochemical analysis of paraffin-embedded human-kidney, antibody was diluted at 1:100



Western blot analysis of lysate from L929 cells, using KLRC1/2/3 Antibody.



Western blot analysis of L929 cells using CD159a/c Polyclonal Antibody. Secondary antibody was diluted at 1:20000

This product is suitable for in-vitro studies under the RESEARCH USE ONLY [RUO] licence. This product must not be used as for diagnostic or other medical purposes.
St John's Laboratory Ltd, Knowledge Dock Business Centre, University Way, London, E16 2RD | Tel: 0208 223 3081