

Anti-SIGLEC7 antibody (51-100 Internal) (STJ96646)

STJ96646

GENERAL INFORMATION

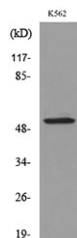
Product Type	Primary antibodies
Short Description	Rabbit polyclonal antibody anti-Sialic Acid-Binding Ig-Like Lectin 7 (51-100 Internal) is suitable for use in Western Blot, Immunohistochemistry, Immunofluorescence and ELISA research applications.
Applications	WB, IHC-P, IF-P, ELISA
Host/Source	Rabbit
Reactivity	Human, Rat, Mouse

PRODUCT PROPERTIES

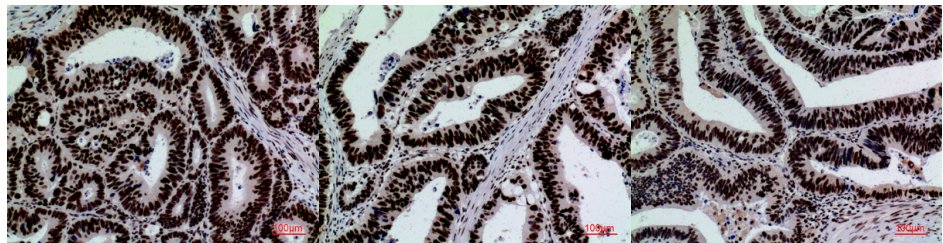
Clonality	Polyclonal
Clone ID	
Concentration	1 mg/mL
Conjugation	Unconjugated
Purification	The antibody was affinity-purified from rabbit anti-serum by affinity-chromatography.
Dilution Range	WB 1:500-1:2000 IHC 1:100-300 ELISA 1:20000
Formulation	PBS, 50% Glycerol, 0.5% BSA and 0.02% Sodium Azide.
Isotype	IgG
Storage Instruction	Store at -20°C for up to 1 year from the date of receipt, and avoid repeat freeze-thaw cycles.

TARGET INFORMATION

Gene ID	27036
Gene Symbol	SIGLEC7
Uniprot ID	SIGL7_HUMAN
Immunogen	The antiserum was produced against synthesized peptide derived from the Internal region of human SIGLEC7 at amino acid range 51-100
Immunogen Region	51-100 Internal
Specificity	SIGLEC7 polyclonal antibody (Sialic Acid-Binding Ig-Like Lectin 7) binds to endogenous Sialic Acid-Binding Ig-Like Lectin 7 at the amino acid region 51-100 Internal.
Immunogen Sequence	



Western blot analysis of lysate from K562 cells, using SIGLEC7 Antibody.



Immunohistochemical analysis of paraffin-embedded human-colon-cancer, antibody was diluted at 1:100

Immunohistochemical analysis of paraffin-embedded human-colon-cancer, antibody was diluted at 1:100

Immunohistochemical analysis of paraffin-embedded human-colon-cancer, antibody was diluted at 1:100

This product is suitable for in-vitro studies under the RESEARCH USE ONLY [RUO] licence. This product must not be used as for diagnostic or other medical purposes.
St John's Laboratory Ltd, Knowledge Dock Business Centre, University Way, London, E16 2RD | Tel: 0208 223 3081