

Anti-SLAMF1 antibody (71-120 region) (STJ96644)

STJ96644

GENERAL INFORMATION

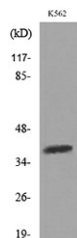
Product Type	Primary antibodies
Short Description	Rabbit polyclonal antibody anti-Signaling Lymphocytic Activation Molecule (71-120 region) is suitable for use in Western Blot, Immunohistochemistry, Immunofluorescence and ELISA research applications.
Applications	WB, IHC-P, IF-P, ELISA
Host/Source	Rabbit
Reactivity	Human, Rat, Mouse

PRODUCT PROPERTIES

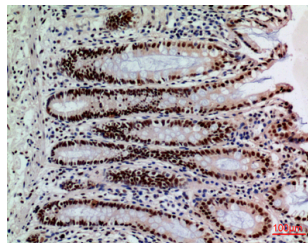
Clonality	Polyclonal
Clone ID	
Concentration	1 mg/mL
Conjugation	Unconjugated
Purification	The antibody was affinity-purified from rabbit anti-serum by affinity-chromatography.
Dilution Range	WB 1:500-1:2000 IHC 1:100-300 ELISA 1:20000
Formulation	PBS, 50% Glycerol, 0.5% BSA and 0.02% Sodium Azide.
Isotype	IgG
Storage Instruction	Store at -20°C for up to 1 year from the date of receipt, and avoid repeat freeze-thaw cycles.

TARGET INFORMATION

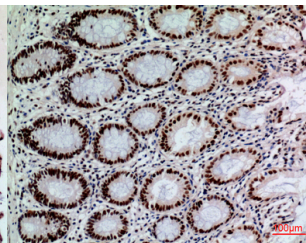
Gene ID	6504
Gene Symbol	SLAMF1
Uniprot ID	SLAF1_HUMAN
Immunogen	The antiserum was produced against synthesized peptide derived from the Internal region of human SLAMF1 at amino acid range 81-130
Immunogen Region	71-120 region
Specificity	SLAMF1 polyclonal antibody (Signaling Lymphocytic Activation Molecule) binds to endogenous Signaling Lymphocytic Activation Molecule at the amino acid region 71-120 region.
Immunogen Sequence	



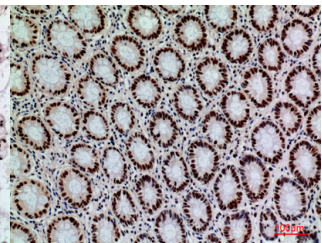
Western blot analysis of lysate from K562 cells, using SLAMF1 Antibody.



Immunohistochemical analysis of paraffin-embedded human-colon, antibody was diluted at 1:100



Immunohistochemical analysis of paraffin-embedded human-colon, antibody was diluted at 1:100



Immunohistochemical analysis of paraffin-embedded human-colon, antibody was diluted at 1:100