

Anti-KIR3DL3 antibody (221-270 Internal) (STJ96638)

STJ96638

GENERAL INFORMATION

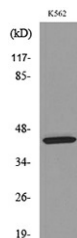
Product Type	Primary antibodies
Short Description	Rabbit polyclonal antibody anti-Killer Cell Immunoglobulin-Like Receptor 3dl3 (221-270 Internal) is suitable for use in Western Blot, Immunohistochemistry, Immunofluorescence and ELISA research applications.
Applications	WB, IHC-P, IF-P, ELISA
Host/Source	Rabbit
Reactivity	Human, Rat, Mouse

PRODUCT PROPERTIES

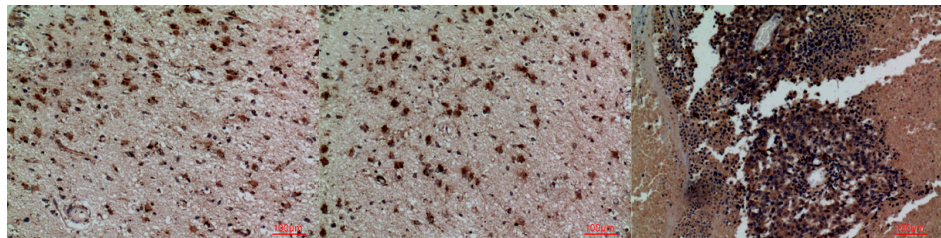
Clonality	Polyclonal
Clone ID	
Concentration	1 mg/mL
Conjugation	Unconjugated
Purification	The antibody was affinity-purified from rabbit anti-serum by affinity-chromatography.
Dilution Range	WB 1:500-1:2000 IHC 1:100-300 ELISA 1:20000
Formulation	PBS, 50% Glycerol, 0.5% BSA and 0.02% Sodium Azide.
Isotype	IgG
Storage Instruction	Store at -20°C for up to 1 year from the date of receipt, and avoid repeat freeze-thaw cycles.

TARGET INFORMATION

Gene ID	NA
Gene Symbol	KIR3DL3
Uniprot ID	KI3L3_HUMAN
Immunogen	The antiserum was produced against synthesized peptide derived from the Internal region of human KIR3DL3 at amino acid range 231-280
Immunogen Region	221-270 Internal
Specificity	KIR3DL3 polyclonal antibody (Killer Cell Immunoglobulin-Like Receptor 3dl3) binds to endogenous Killer Cell Immunoglobulin-Like Receptor 3dl3 at the amino acid region 221-270 Internal.
Immunogen Sequence	



Western blot analysis of lysate from K562 cells, using KIR3DL3 Antibody.



Immunohistochemical analysis of paraffin-embedded human-brain, antibody was diluted at 1:100

Immunohistochemical analysis of paraffin-embedded human-brain, antibody was diluted at 1:100

Immunohistochemical analysis of paraffin-embedded human-lung-cancer, antibody was diluted at 1:100

This product is suitable for in-vitro studies under the RESEARCH USE ONLY [RUO] licence. This product must not be used as for diagnostic or other medical purposes.
St John's Laboratory Ltd, Knowledge Dock Business Centre, University Way, London, E16 2RD | Tel: 0208 223 3081