

Anti-SIGLEC5 antibody (91-140 Internal) (STJ96635)

STJ96635

GENERAL INFORMATION

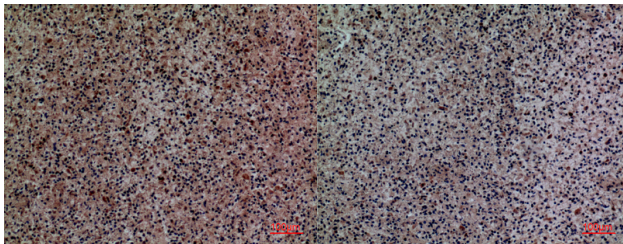
Product Type	Primary antibodies
Short Description	Rabbit polyclonal antibody anti-Sialic Acid-Binding Ig-Like Lectin 5 (91-140 Internal) is suitable for use in Western Blot, Immunohistochemistry, Immunofluorescence and ELISA research applications.
Applications	WB, IHC-P, IF-P, ELISA
Host/Source	Rabbit
Reactivity	Human, Rat, Mouse

PRODUCT PROPERTIES

Clonality	Polyclonal
Clone ID	
Concentration	1 mg/mL
Conjugation	Unconjugated
Purification	The antibody was affinity-purified from rabbit anti-serum by affinity-chromatography.
Dilution Range	WB 1:500-1:2000 IHC 1:100-300 ELISA 1:20000
Formulation	PBS, 50% Glycerol, 0.5% BSA and 0.02% Sodium Azide.
Isotype	IgG
Storage Instruction	Store at -20°C for up to 1 year from the date of receipt, and avoid repeat freeze-thaw cycles.

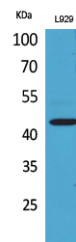
TARGET INFORMATION

Gene ID	8778
Gene Symbol	SIGLEC5
Uniprot ID	SIGL5_HUMAN
Immunogen	Synthesized peptide derived from Sialic acid-binding Ig-like lectin 5/Sialic acid-binding Ig-like lectin 14 at amino acid range: 91-140
Immunogen Region	91-140 Internal
Specificity	SIGLEC5 polyclonal antibody (Sialic Acid-Binding Ig-Like Lectin 5) binds to endogenous Sialic Acid-Binding Ig-Like Lectin 5 at the amino acid region 91-140 Internal.
Immunogen Sequence	



Immunohistochemical analysis of paraffin-embedded human-spleen, antibody was diluted at 1:100

Immunohistochemical analysis of paraffin-embedded human-spleen, antibody was diluted at 1:100



Western blot analysis of L929 cells using Siglec-5/14 Polyclonal Antibody. Antibody was diluted at 1:1000. Secondary antibody was diluted at 1:20000

This product is suitable for in-vitro studies under the RESEARCH USE ONLY [RUO] licence. This product must not be used as for diagnostic or other medical purposes.
St John's Laboratory Ltd, Knowledge Dock Business Centre, University Way, London, E16 2RD | Tel: 0208 223 3081