

Anti-CD248 antibody (331-380 Internal) (STJ96632)

STJ96632

GENERAL INFORMATION

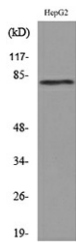
Product Type	Primary antibodies
Short Description	Rabbit polyclonal antibody anti-Endosialin (331-380 Internal) is suitable for use in Western Blot and ELISA research applications.
Applications	WB, ELISA
Host/Source	Rabbit
Reactivity	Human, Rat, Mouse

PRODUCT PROPERTIES

Clonality	Polyclonal
Clone ID	
Concentration	1 mg/mL
Conjugation	Unconjugated
Purification	The antibody was affinity-purified from rabbit anti-serum by affinity-chromatography.
Dilution Range	WB 1:500-1:2000 ELISA 1:20000
Formulation	PBS, 50% Glycerol, 0.5% BSA and 0.02% Sodium Azide.
Isotype	IgG
Storage Instruction	Store at -20°C for up to 1 year from the date of receipt, and avoid repeat freeze-thaw cycles.

TARGET INFORMATION

Gene ID	57124
Gene Symbol	CD248
Uniprot ID	CD248_HUMAN
Immunogen	The antiserum was produced against synthesized peptide derived from the Internal region of human CD248 at amino acid range 341-390
Immunogen Region	331-380 Internal
Specificity	CD248 polyclonal antibody (Endosialin) binds to endogenous Endosialin at the amino acid region 331-380 Internal.
Immunogen Sequence	



Western blot analysis of lysate from HepG2 cells, using CD248 Antibody.



Western blot analysis of HepG2 cells using CD248 Polyclonal Antibody. Secondary antibody was diluted at 1:20000

This product is suitable for in-vitro studies under the RESEARCH USE ONLY [RUO] licence. This product must not be used as for diagnostic or other medical purposes.
St John's Laboratory Ltd, Knowledge Dock Business Centre, University Way, London, E16 2RD | Tel: 0208 223 3081