

Anti-IL2RB antibody (31-80 N-Term) (STJ96629)

STJ96629

GENERAL INFORMATION

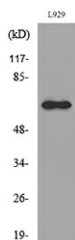
Product Type	Primary antibodies
Short Description	Rabbit polyclonal antibody anti-Interleukin-2 Receptor Subunit Beta (31-80 N-Term) is suitable for use in Western Blot and ELISA research applications.
Applications	WB, ELISA
Host/Source	Rabbit
Reactivity	Human, Rat, Mouse

PRODUCT PROPERTIES

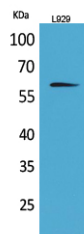
Clonality	Polyclonal
Clone ID	
Concentration	1 mg/mL
Conjugation	Unconjugated
Purification	The antibody was affinity-purified from rabbit anti-serum by affinity-chromatography.
Dilution Range	WB 1:500-1:2000 ELISA 1:20000
Formulation	PBS, 50% Glycerol, 0.5% BSA and 0.02% Sodium Azide.
Isotype	IgG
Storage	Store at -20°C for up to 1 year from the date of receipt, and avoid repeat freeze-thaw cycles.
Instruction	

TARGET INFORMATION

Gene ID	3560
Gene Symbol	IL2RB
Uniprot ID	IL2RB_HUMAN
Immunogen	The antiserum was produced against synthesized peptide derived from the N-terminal region of human IL2RB at amino acid range 31-80
Immunogen Region	31-80 N-Term
Specificity	IL2RB polyclonal antibody (Interleukin-2 Receptor Subunit Beta) binds to endogenous Interleukin-2 Receptor Subunit Beta at the amino acid region 31-80 N-Term.
Immunogen Sequence	



Western blot analysis of lysate from L929 cells, using IL2RB Antibody.



Western blot analysis of L929 cells using IL-2R Beta Polyclonal Antibody. Secondary antibody was diluted at 1:20000

This product is suitable for in-vitro studies under the RESEARCH USE ONLY [RUO] licence. This product must not be used as for diagnostic or other medical purposes.
St John's Laboratory Ltd, Knowledge Dock Business Centre, University Way, London, E16 2RD | Tel: 0208 223 3081