

Anti-PSG1 antibody (221-270 Internal) (STJ96618)

STJ96618

GENERAL INFORMATION

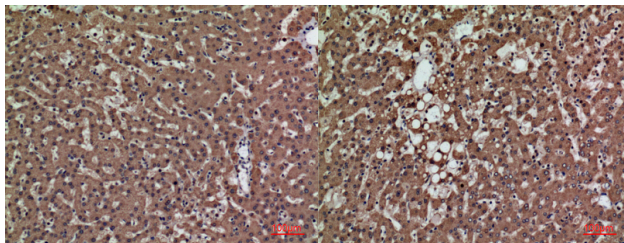
Product Type	Primary antibodies
Short Description	Rabbit polyclonal antibody anti-Pregnancy-Specific Beta-1-Glycoprotein 1 (221-270 Internal) is suitable for use in Western Blot, Immunohistochemistry, Immunofluorescence and ELISA research applications.
Applications	WB, IHC-P, IF-P, ELISA
Host/Source	Rabbit
Reactivity	Human, Rat, Mouse

PRODUCT PROPERTIES

Clonality	Polyclonal
Clone ID	
Concentration	1 mg/mL
Conjugation	Unconjugated
Purification	The antibody was affinity-purified from rabbit anti-serum by affinity-chromatography.
Dilution	WB 1:500-1:2000
Range	IHC 1:100-300 ELISA 1:20000
Formulation	PBS, 50% Glycerol, 0.5% BSA and 0.02% Sodium Azide.
Isotype	IgG
Storage Instruction	Store at 20°C for up to 1 year from the date of receipt, and avoid repeat freeze-thaw cycles.

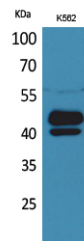
TARGET INFORMATION

Gene ID	5669
Gene Symbol	PSG1
Uniprot ID	PSG1_HUMAN
Immunogen	The antiserum was produced against synthesized peptide derived from the Internal region of human PSG1 at amino acid range 221-270
Immunogen Region	221-270 Internal
Specificity	PSG1 polyclonal antibody (Pregnancy-Specific Beta-1-Glycoprotein 1) binds to endogenous Pregnancy-Specific Beta-1-Glycoprotein 1 at the amino acid region 221-270 Internal.
Immunogen Sequence	



Immunohistochemical analysis of paraffin-embedded human-liver, antibody was diluted at 1:100

Immunohistochemical analysis of paraffin-embedded human-liver, antibody was diluted at 1:100



Western blot analysis of K562 cells using PSG1 Polyclonal Antibody. Secondary antibody was diluted at 1:20000

This product is suitable for in-vitro studies under the RESEARCH USE ONLY [RUO] licence. This product must not be used as for diagnostic or other medical purposes.
St John's Laboratory Ltd, Knowledge Dock Business Centre, University Way, London, E16 2RD | Tel: 0208 223 3081