

Anti-CD55 antibody (241-290 Internal) (STJ96615)

STJ96615

GENERAL INFORMATION

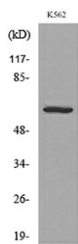
Product Type	Primary antibodies
Short Description	Rabbit polyclonal antibody anti-Complement Decay-Accelerating Factor (241-290 Internal) is suitable for use in Western Blot and ELISA research applications.
Applications	WB, ELISA
Host/Source	Rabbit
Reactivity	Human, Rat, Mouse

PRODUCT PROPERTIES

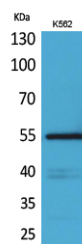
Clonality	Polyclonal
Clone ID	
Concentration	1 mg/mL
Conjugation	Unconjugated
Purification	The antibody was affinity-purified from rabbit anti-serum by affinity-chromatography.
Dilution Range	WB 1:500-1:2000 ELISA 1:20000
Formulation	PBS, 50% Glycerol, 0.5% BSA and 0.02% Sodium Azide.
Isotype	IgG
Storage Instruction	Store at -20°C for up to 1 year from the date of receipt, and avoid repeat freeze-thaw cycles.

TARGET INFORMATION

Gene ID	1604
Gene Symbol	CD55
Uniprot ID	DAF_HUMAN
Immunogen	The antiserum was produced against synthesized peptide derived from the Internal region of human CD55 at amino acid range 241-290
Immunogen Region	241-290 Internal
Specificity	CD55 polyclonal antibody (Complement Decay-Accelerating Factor) binds to endogenous Complement Decay-Accelerating Factor at the amino acid region 241-290 Internal.
Immunogen Sequence	



Western blot analysis of lysate from K562 cells, using CD55 Antibody.



Western blot analysis of K562 cells using CD55 Polyclonal Antibody. Secondary antibody was diluted at 1:20000

This product is suitable for in-vitro studies under the RESEARCH USE ONLY [RUO] licence. This product must not be used as for diagnostic or other medical purposes.
St John's Laboratory Ltd, Knowledge Dock Business Centre, University Way, London, E16 2RD | Tel: 0208 223 3081