

Anti-FCGR2B antibody (131-180 Internal) (STJ96611)

STJ96611

GENERAL INFORMATION

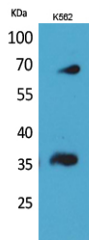
Product Type	Primary antibodies
Short Description	Rabbit polyclonal antibody anti-Low Affinity Immunoglobulin Gamma Fc Region Receptor II-B (131-180 Internal) is suitable for use in Western Blot and ELISA research applications.
Applications	WB, ELISA
Host/Source	Rabbit
Reactivity	Human, Rat, Mouse

PRODUCT PROPERTIES

Clonality	Polyclonal
Clone ID	
Concentration	1 mg/mL
Conjugation	Unconjugated
Purification	The antibody was affinity-purified from rabbit anti-serum by affinity-chromatography.
Dilution	WB 1:500-1:2000
Range	ELISA 1:20000
Formulation	PBS, 50% Glycerol, 0.5% BSA and 0.02% Sodium Azide.
Isotype	IgG
Storage	Store at -20°C for up to 1 year from the date of receipt, and avoid repeat freeze-thaw cycles.
Instruction	

TARGET INFORMATION

Gene ID	2213
Gene Symbol	FCGR2B
Uniprot ID	FCG2B_HUMAN
Immunogen	The antiserum was produced against synthesized peptide derived from the Internal region of human FCGR2B/C at amino acid range 141-190
Immunogen Region	131-180 Internal
Specificity	FCGR2B polyclonal antibody (Low Affinity Immunoglobulin Gamma Fc Region Receptor II-B) binds to endogenous Low Affinity Immunoglobulin Gamma Fc Region Receptor II-B at the amino acid region 131-180 Internal.
Immunogen Sequence	



Western blot analysis of K562 cells using CD32-B/C Polyclonal Antibody. Secondary antibody was diluted at 1:20000

This product is suitable for in-vitro studies under the RESEARCH USE ONLY [RUO] licence. This product must not be used as for diagnostic or other medical purposes.
 St John's Laboratory Ltd, Knowledge Dock Business Centre, University Way, London, E16 2RD | Tel: 0208 223 3081