

Anti-CD28 antibody (11-60 Internal) (STJ96609)

STJ96609

GENERAL INFORMATION

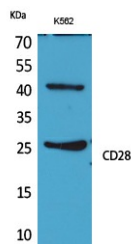
Product Type	Primary antibodies
Short Description	Rabbit polyclonal antibody anti-T-Cell-Specific Surface Glycoprotein Cd28 (11-60 Internal) is suitable for use in Western Blot and ELISA research applications.
Applications	WB, ELISA
Host/Source	Rabbit
Reactivity	Human, Rat, Mouse

PRODUCT PROPERTIES

Clonality	Polyclonal
Clone ID	
Concentration	1 mg/mL
Conjugation	Unconjugated
Purification	The antibody was affinity-purified from rabbit anti-serum by affinity-chromatography.
Dilution Range	WB 1:500-1:2000 ELISA 1:20000
Formulation	PBS, 50% Glycerol, 0.5% BSA and 0.02% Sodium Azide.
Isotype	IgG
Storage	Store at -20°C for up to 1 year from the date of receipt, and avoid repeat freeze-thaw cycles.
Instruction	

TARGET INFORMATION

Gene ID	940
Gene Symbol	CD28
Uniprot ID	CD28_HUMAN
Immunogen	Synthesized peptide derived from T-cell-specific surface glycoprotein CD28 at amino acid range: 11-60
Immunogen Region	11-60 Internal
Specificity	CD28 polyclonal antibody (T-Cell-Specific Surface Glycoprotein Cd28) binds to endogenous T-Cell-Specific Surface Glycoprotein Cd28 at the amino acid region 11-60 Internal.
Immunogen Sequence	



Western blot analysis of K562 cells using CD28 Polyclonal Antibody. Secondary antibody was diluted at 1:20000

This product is suitable for in-vitro studies under the RESEARCH USE ONLY [RUO] licence. This product must not be used as for diagnostic or other medical purposes.
St John's Laboratory Ltd, Knowledge Dock Business Centre, University Way, London, E16 2RD | Tel: 0208 223 3081