

Anti-CD7 antibody (41-90 Internal) (STJ96607)

STJ96607

GENERAL INFORMATION

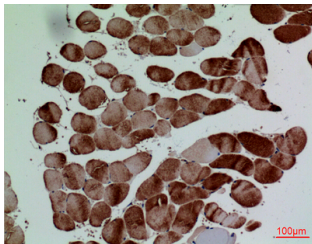
Product Type	Primary antibodies
Short Description	Rabbit polyclonal antibody anti-T-Cell antigen Cd7 (41-90 Internal) is suitable for use in Western Blot, Immunohistochemistry, Immunofluorescence and ELISA research applications.
Applications	WB, IHC-P, IF-P, ELISA
Host/Source	Rabbit
Reactivity	Human, Rat, Mouse

PRODUCT PROPERTIES

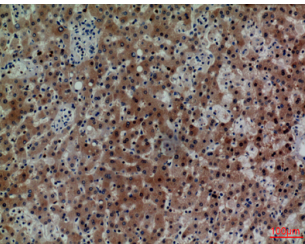
Clonality	Polyclonal
Clone ID	
Concentration	1 mg/mL
Conjugation	Unconjugated
Purification	The antibody was affinity-purified from rabbit anti-serum by affinity-chromatography.
Dilution Range	WB 1:500-1:2000 IHC 1:100-300 ELISA 1:20000
Formulation	PBS, 50% Glycerol, 0.5% BSA and 0.02% Sodium Azide.
Isotype	IgG
Storage Instruction	Store at -20°C for up to 1 year from the date of receipt, and avoid repeat freeze-thaw cycles.

TARGET INFORMATION

Gene ID	924
Gene Symbol	CD7
Uniprot ID	CD7_HUMAN
Immunogen	The antiserum was produced against synthesized peptide derived from the Internal region of human CD7 at amino acid range 51-100
Immunogen Region	41-90 Internal
Specificity	CD7 polyclonal antibody (T-Cell Antigen Cd7) binds to endogenous T-Cell Antigen Cd7 at the amino acid region 41-90 Internal.
Immunogen Sequence	



Immunohistochemical analysis of paraffin-embedded human-muscle, antibody was diluted at 1:100



Immunohistochemical analysis of paraffin-embedded human-liver, antibody was diluted at 1:100

