

Anti-CD2 antibody (31-80 N-Term) (STJ96606)

STJ96606

GENERAL INFORMATION

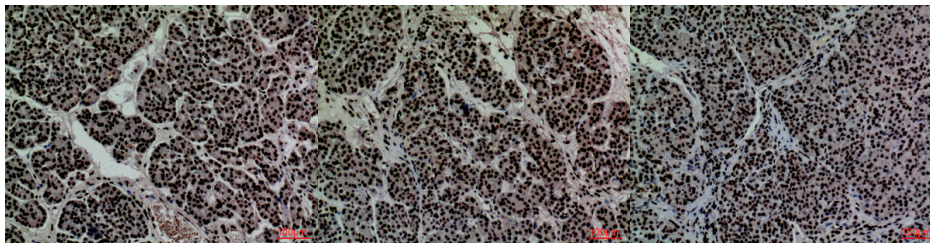
Product Type	Primary antibodies
Short Description	Rabbit polyclonal antibody anti-T-Cell Surface antigen Cd2 (31-80 N-Term) is suitable for use in Western Blot, Immunohistochemistry, Immunofluorescence and ELISA research applications.
Applications	WB, IHC-P, IF-P, ELISA
Host/Source	Rabbit
Reactivity	Human, Rat, Mouse

PRODUCT PROPERTIES

Clonality	Polyclonal
Clone ID	
Concentration	1 mg/mL
Conjugation	Unconjugated
Purification	The antibody was affinity-purified from rabbit anti-serum by affinity-chromatography.
Dilution Range	WB 1:500-1:2000 IHC 1:100-300 ELISA 1:20000
Formulation	PBS, 50% Glycerol, 0.5% BSA and 0.02% Sodium Azide.
Isotype	IgG
Storage Instruction	Store at -20°C for up to 1 year from the date of receipt, and avoid repeat freeze-thaw cycles.

TARGET INFORMATION

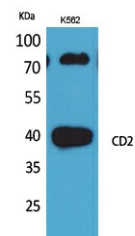
Gene ID	914
Gene Symbol	CD2
Uniprot ID	CD2_HUMAN
Immunogen	The antiserum was produced against synthesized peptide derived from the N-terminal region of human CD2 at amino acid range 31-80
Immunogen Region	31-80 N-Term
Specificity	CD2 polyclonal antibody (T-Cell Surface Antigen Cd2) binds to endogenous T-Cell Surface Antigen Cd2 at the amino acid region 31-80 N-Term.
Immunogen Sequence	



Immunohistochemical analysis of paraffin-embedded human-pancreas, antibody was diluted at 1:100

Immunohistochemical analysis of paraffin-embedded human-pancreas, antibody was diluted at 1:100

Immunohistochemical analysis of paraffin-embedded human-pancreas, antibody was diluted at 1:100



Western blot analysis of K562 cells using CD2 Polyclonal Antibody. Secondary antibody was diluted at 1:20000

This product is suitable for in-vitro studies under the RESEARCH USE ONLY [RUO] licence. This product must not be used as for diagnostic or other medical purposes.
St John's Laboratory Ltd, Knowledge Dock Business Centre, University Way, London, E16 2RD | Tel: 0208 223 3081