

Anti-CD1D antibody (161-210 Internal) (STJ96604)

STJ96604

GENERAL INFORMATION

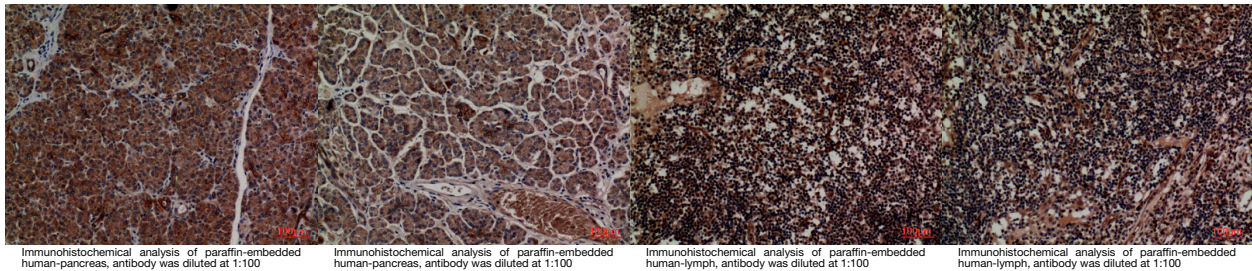
Product Type	Primary antibodies
Short Description	Rabbit polyclonal antibody anti-antigen-Presenting Glycoprotein Cd1d (161-210 Internal) is suitable for use in Western Blot, Immunohistochemistry, Immunofluorescence and ELISA research applications.
Applications	WB, IHC-P, IF-P, ELISA
Host/Source	Rabbit
Reactivity	Human, Rat, Mouse

PRODUCT PROPERTIES

Clonality	Polyclonal
Clone ID	
Concentration	1 mg/mL
Conjugation	Unconjugated
Purification	The antibody was affinity-purified from rabbit anti-serum by affinity-chromatography.
Dilution Range	WB 1:500-1:2000 IHC 1:100-300 ELISA 1:20000
Formulation	PBS, 50% Glycerol, 0.5% BSA and 0.02% Sodium Azide.
Isotype	IgG
Storage Instruction	Store at -20°C for up to 1 year from the date of receipt, and avoid repeat freeze-thaw cycles.

TARGET INFORMATION

Gene ID	912
Gene Symbol	CD1D
Uniprot ID	CD1D_HUMAN
Immunogen	Synthesized peptide derived from Antigen-presenting glycoprotein CD1d at amino acid range: 161-210
Immunogen Region	161-210 Internal
Specificity	CD1D polyclonal antibody (Antigen-Presenting Glycoprotein Cd1d) binds to endogenous Antigen-Presenting Glycoprotein Cd1d at the amino acid region 161-210 Internal.
Immunogen Sequence	



This product is suitable for in-vitro studies under the RESEARCH USE ONLY [RUO] licence. This product must not be used as for diagnostic or other medical purposes.
St John's Laboratory Ltd, Knowledge Dock Business Centre, University Way, London, E16 2RD | Tel: 0208 223 3081