

Anti-TF antibody (611-660 C-Term) (STJ96602)

STJ96602

GENERAL INFORMATION

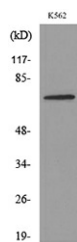
Product Type	Primary antibodies
Short Description	Rabbit polyclonal antibody anti-Serotransferrin (611-660 C-Term) is suitable for use in Western Blot, Immunohistochemistry, Immunofluorescence and ELISA research applications.
Applications	WB, IHC-P, IF-P, ELISA
Host/Source	Rabbit
Reactivity	Human, Mouse, Rat

PRODUCT PROPERTIES

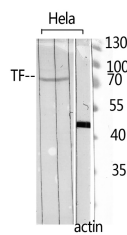
Clonality	Polyclonal
Clone ID	
Concentration	1 mg/mL
Conjugation	Unconjugated
Purification	The antibody was affinity-purified from rabbit anti-serum by affinity-chromatography.
Dilution Range	WB 1:500-1:2000 IHC 1:100-300 ELISA 1:20000
Formulation	PBS, 50% Glycerol, 0.5% BSA and 0.02% Sodium Azide.
Isotype	IgG
Storage Instruction	Store at -20°C for up to 1 year from the date of receipt, and avoid repeat freeze-thaw cycles.

TARGET INFORMATION

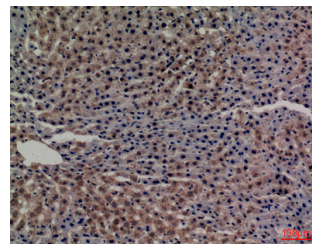
Gene ID	7018
Gene Symbol	TF
Uniprot ID	TRFE_HUMAN
Immunogen	The antiserum was produced against synthesized peptide derived from the C-terminal region of human TF at amino acid range 611-660
Immunogen Region	611-660 C-Term
Specificity	TF polyclonal antibody (Serotransferrin) binds to endogenous Serotransferrin at the amino acid region 611-660 C-Term.
Immunogen Sequence	



Western blot analysis of lysate from K562 cells, using TF Antibody.



Western blot analysis of HELA using TF Polyclonal Antibody. Antibody was diluted at 1:500. Secondary antibody was diluted at 1:20000



Immunohistochemical analysis of paraffin-embedded rat-liver, antibody was diluted at 1:100



Western blot analysis of K562 cells using Transferrin Polyclonal Antibody. Antibody was diluted at 1:500. Secondary antibody was diluted at 1:20000

This product is suitable for in-vitro studies under the RESEARCH USE ONLY [RUO] licence. This product must not be used as for diagnostic or other medical purposes.
St John's Laboratory Ltd, Knowledge Dock Business Centre, University Way, London, E16 2RD | Tel: 0208 223 3081