

Anti-LASP1 antibody (Internal) (STJ96599)

STJ96599

GENERAL INFORMATION

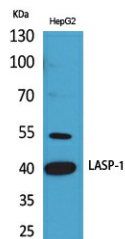
Product Type	Primary antibodies
Short Description	Rabbit polyclonal antibody anti-Lim And Sh3 Domain Protein 1 (Internal) is suitable for use in Western Blot and ELISA research applications.
Applications	WB, ELISA
Host/Source	Rabbit
Reactivity	Human, Mouse, Rat

PRODUCT PROPERTIES

Clonality	Polyclonal
Clone ID	
Concentration	1 mg/mL
Conjugation	Unconjugated
Purification	The antibody was affinity-purified from rabbit anti-serum by affinity-chromatography.
Dilution Range	WB 1:500-1:2000 ELISA 1:20000
Formulation	PBS, 50% Glycerol, 0.5% BSA and 0.02% Sodium Azide.
Isotype	IgG
Storage	Store at -20°C for up to 1 year from the date of receipt, and avoid repeat freeze-thaw cycles.
Instruction	

TARGET INFORMATION

Gene ID	3927
Gene Symbol	LASP1
Uniprot ID	LASP1_HUMAN
Immunogen	The antiserum was produced against synthesized peptide derived from the Internal region of human LASP1 at amino acid range 51-100
Immunogen Region	Internal
Specificity	LASP1 polyclonal antibody (Lim And Sh3 Domain Protein 1) binds to endogenous Lim And Sh3 Domain Protein 1 at the amino acid region Internal.
Immunogen Sequence	



Western blot analysis of HepG2 cells using LASP-1 Polyclonal Antibody. Antibody was diluted at 1:500. Secondary antibody was diluted at 1:20000